

VORTAC TXK	APP CRS	Rwy Idg	4559
116.3	122°	TDZE	388
Chan 110		Apt Elev	390

VOR RWY 13

TEXARKANA RGNL-WEBB FLD (TXK)

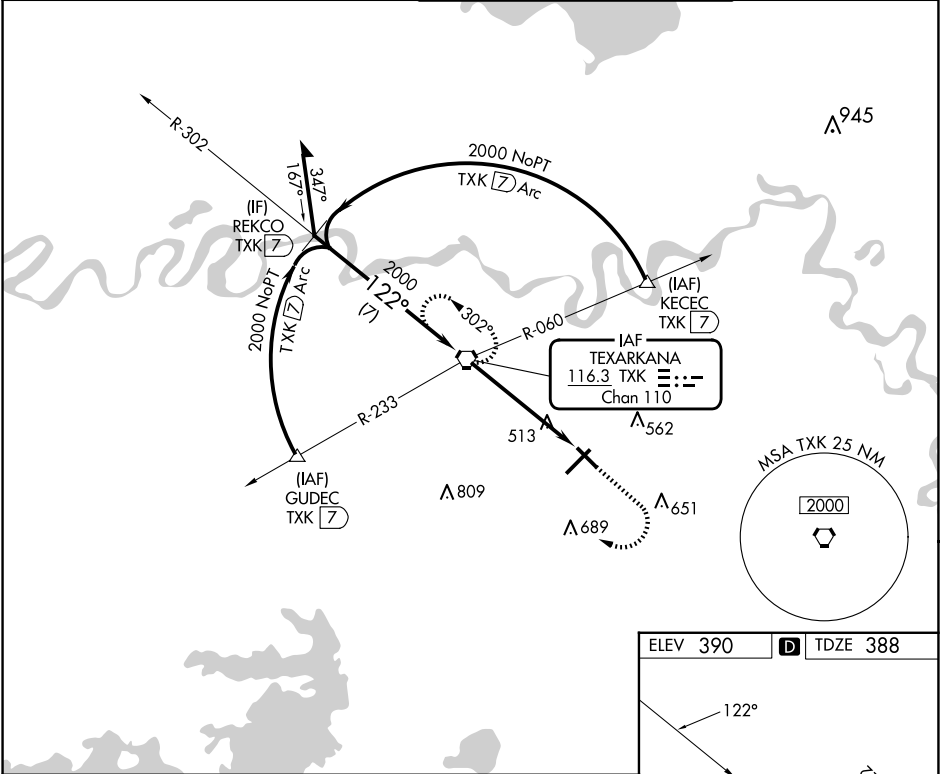
⚠

When local altimeter setting not received, use De Queen altimeter setting and increase all MDA 100 feet, increase S-13 and Cat C and D visibility ¼ SM, and Circling Cat C and D visibility ¼ SM. Visibility reduction by helicopters NA. VDP NA when using De Queen altimeter setting.

MISSED APPROACH:

Climb to 1500 then climbing right turn to 2000 direct TXK VORTAC and hold.

ATIS	FORT WORTH CENTER	TEXARKANA TOWER ★	GND CON
120.2	123.925 269.475	123.875 (CTAF) 235.625	119.225



VGSI and descent angles not coincident (VGSI angle 3.00/TCH 48).

Remain within 10 NM

2000

302°

TXK VORTAC

2000

122°

2.85°

TCH 54

4.1 NM

1.2 NM

	1500	2000	TXK
	↑	↷	⬢

CATEGORY	A	B	C	D
S-13	780-1	392 (400-1)	780-1⅛ 392 (400-1⅛)	780-1¼ 392 (400-1¼)
CIRCLING	820-1 430 (500-1)	900-1 510 (600-1)	1000-1¾ 610 (700-1¾)	1080-2¼ 690 (700-2¼)

ELEV 390

TDZE 388

MIRL Rwy 13-31

MIRL Rwy 4-22

FAF to MAP 5.2 NM

Knots	60	90	120	150	180
Min:Sec	5:12	3:28	2:36	2:05	1:44

SC-1, 07 AUG 2025 to 04 SEP 2025

SC-1, 07 AUG 2025 to 04 SEP 2025