

WAAS Ch 53699 W22A	APP CRS 220°	Rwy Idg 6602 TDZE 384 Apt Elev 390
--	------------------------	---

RNAV (GPS) RWY 22
TEXARKANA RGNI-WEBB FLD (TXK)

V DME/DME RNP-0.3 NA. For uncompensated Baro-VNAV systems, LNAV/VNAV NA below -15°C (5°F) or above 48°C (118°F). When local altitude setting not received, use J Lynn Helms Sevier County altimeter setting and increase all DA/MDA 100 feet, increase LPV all Cnts visibility ¼ mile, LNAV/VNAV all Cnts visibility ½ mile, LNAV and circling CATs and D visibility ¼ mile. Baro-VNAV and VDP NA when using J Lynn Helms Sevier County altimeter setting. For inoperative MALSR when using J Lynn Helms Sevier County altimeter setting increase LPV all Cnts visibility to 1¼.

MALSR



MISSED APPROACH:
Climb to 2000 direct
YOBUG and hold.

ATIS 120.2	FORT WORTH CENTER 123.925 269.475	TEXARKANA TOWER ★ 123.875 (CTAF) 0 235.625	GND CON 119.225
----------------------	---	--	---------------------------

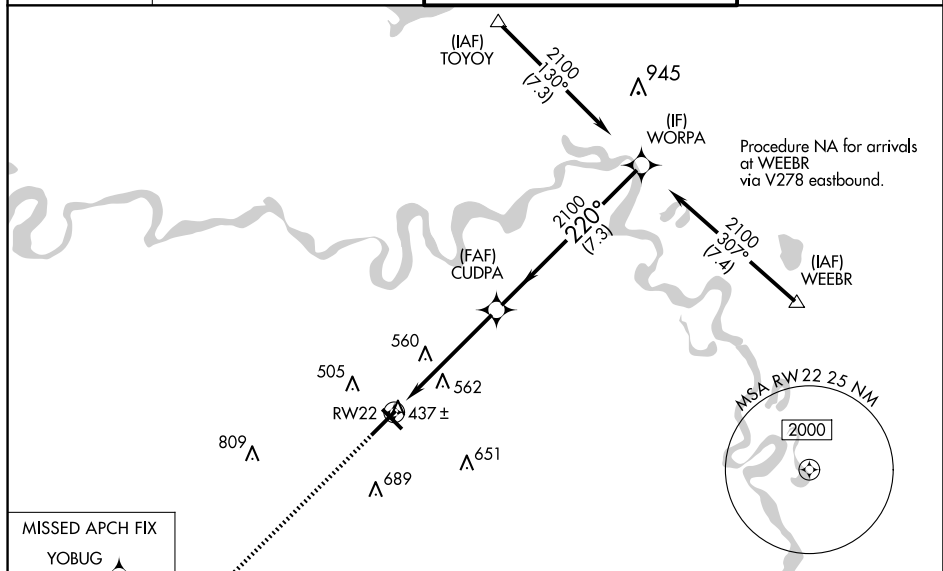


Figure 1: Instrument Landing System (ILS) and Visual Approach Slope Indicator (VASI) for Runway 22. The diagram shows the ILS frequency 111.1 MHz, localizer frequency 111.1 MHz, and glideslope frequency 111.1 MHz. The VASI is a 4-bar system with frequencies 111.1 MHz and 111.1 MHz. The runway is 2200m long. The diagram also shows the runway width, taxiway, and various navigational aids.