

TAMPA, FLORIDA

TACAN RWY 23

TACAN MCF Chan 47	APCH CRS 240°	Rwy Idg 11,421 TDZE 14 Arpt Elev 14
-----------------------------	-------------------------	--

AL-418 (USAF)

MACDILL AFB (KMCF)

* When ALS inop, increase CAT AB RVR to 55, vis to 1 mile; CAT CDE vis to 1 1/4 miles.

** Circling not authorized NW of Rwy 5-23.

ALSF-1

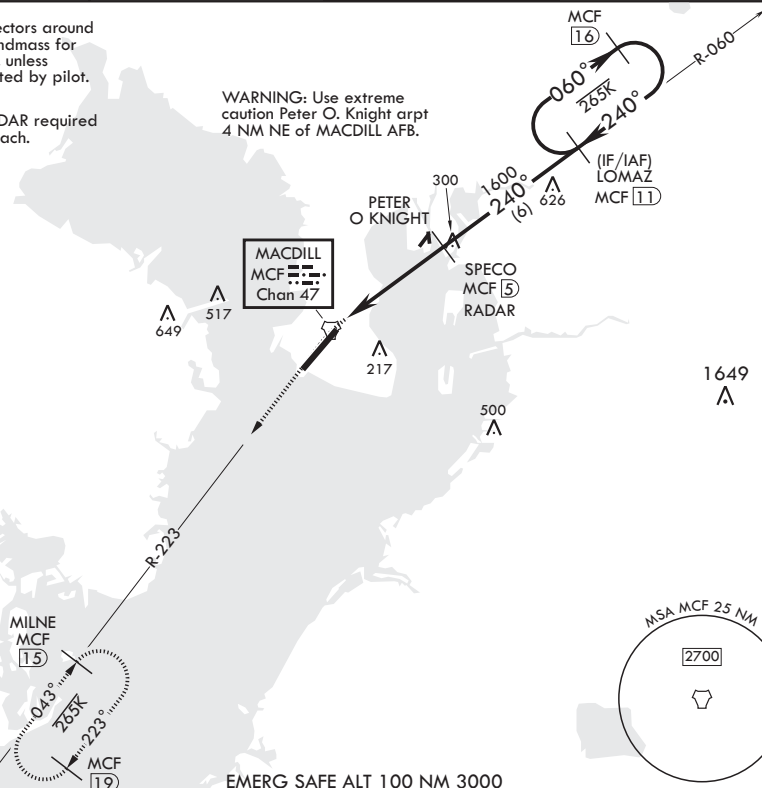
MISSED APPROACH: Climb to 1600 via MCF TACAN R-223 to MILNE and hold.

ATIS 133.825 270.1	TAMPA APP CON 124.95 354.0	TOWER 120.175 294.7	GND CON 118.575 275.8
-----------------------	-------------------------------	------------------------	--------------------------

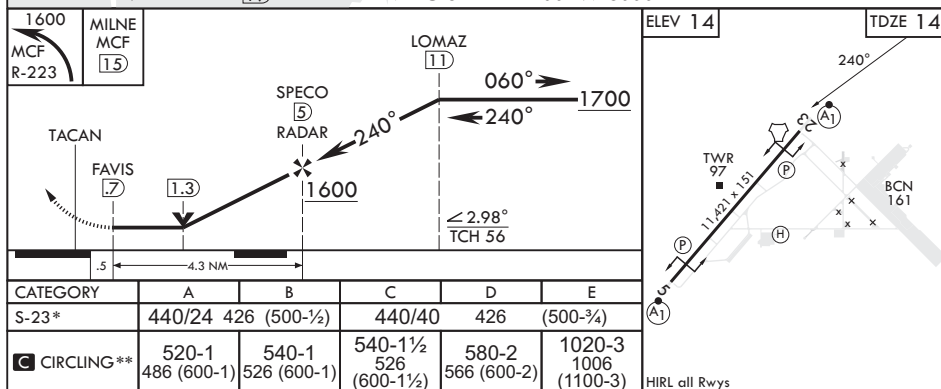
Expect RADAR vectors around St. Petersburg landmass for noise abatement, unless otherwise requested by pilot.

RNAV or ATC RADAR required for missed approach.

WARNING: Use extreme caution Peter O. Knight arpt 4 NM NE of MACDILL AFB.



EMERG SAFE ALT 100 NM 3000



TAMPA, FLORIDA

27°51'N - 82°31'W

MACDILL AFB (KMCF)

Amdt 2 10AUG23

TACAN RWY 23

SE-3, 07 AUG 2025 to 04 SEP 2025

SE-3, 07 AUG 2025 to 04 SEP 2025