

TAMPA, FLORIDA

RNAV (GPS) RWY 5

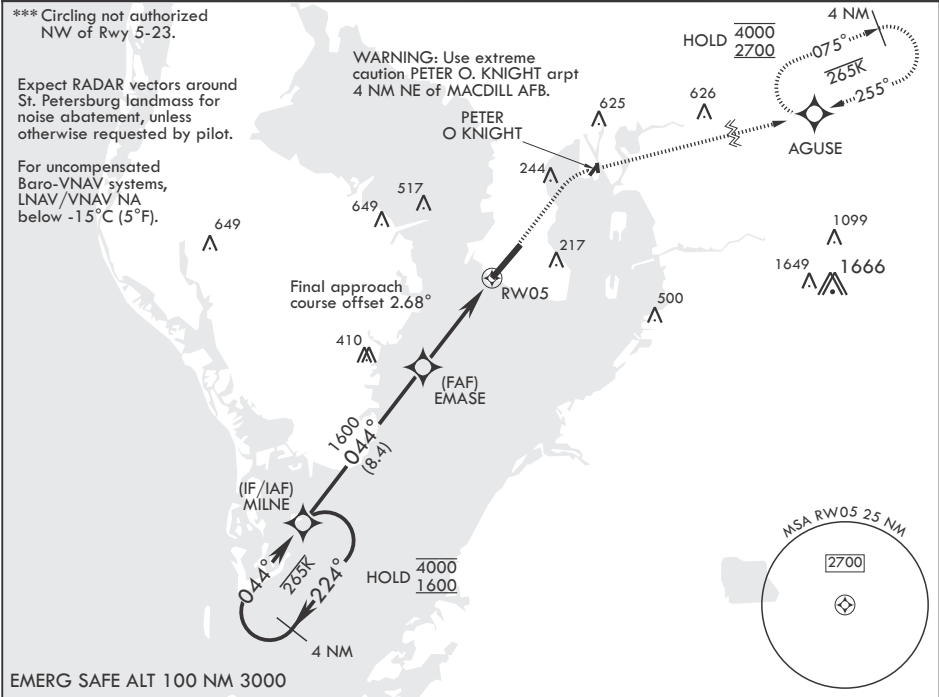
APCH CRS	Rwy Idg	11,421
044°	TDZE	10
	Arprt Elev	14

- (USAF)

MACDILL AFB (KMCF)

RNP APCH	ALSF-1	MISSED APPROACH: Climb to 1700 then climbing right turn to 2700 direct AGUSE and hold.
* When ALS inop, increase CAT AB RVR to 40, vis to 3/4 mile; CAT CDE RVR to 45, vis to 7/8 mile. ** When ALS inop, increase CAT AB RVR to 55, vis to 1 mile, CAT CDE RVR to 60, vis to 1 1/8 miles.		

ATIS 133.825 270.1	TAMPA APP CON 124.95 354.0	TOWER 120.175 294.7	GND CON 118.575 275.8
-----------------------	-------------------------------	------------------------	--------------------------



1700		2700	AGUSE	ELEV 14	TDZE 10
<p>4 NM Holding Pattern</p> <p>4000 1600 224° 044° 1600</p> <p>GP 3.00° TCH 55</p> <p>MILNE</p> <p>EMASE</p> <p>RW05</p> <p>4.8 NM</p>					
CATEGORY	A	B	C	D	E
LNAV/VNAV DA*	260/24 250 (300-½)	264/24 254 (300-½)	272/24 262 (300-½)	283/24 273 (300-½)	304/24 294 (300-½)
LNAV MDA**	420/24 410 (500-½)	420/24 410 (500-½)	420/40	410	(500-¾)
CIRCLING***	500-1 486 (500-1)	540-1 526 (600-1)	540-1½ 526 (600-1½)	580-2 566 (600-2)	1020-3 1006 (1100-3)

TAMPA, FLORIDA

27°51'N - 82°31'W

MACDILL AFB (KMCF)

Amndt 2 10AUG23

RNAV (GPS) RWY 5

SE-3, 07 AUG 2025 to 04 SEP 2025

SE-3, 07 AUG 2025 to 04 SEP 2025