

TAMPA, FLORIDA

AL-416 (FAA)

25219

|             |          |             |
|-------------|----------|-------------|
| APP CRS     | Rwy Ldg  | <b>8300</b> |
| <b>007°</b> | TDZE     | <b>21</b>   |
|             | Apt Elev | <b>26</b>   |

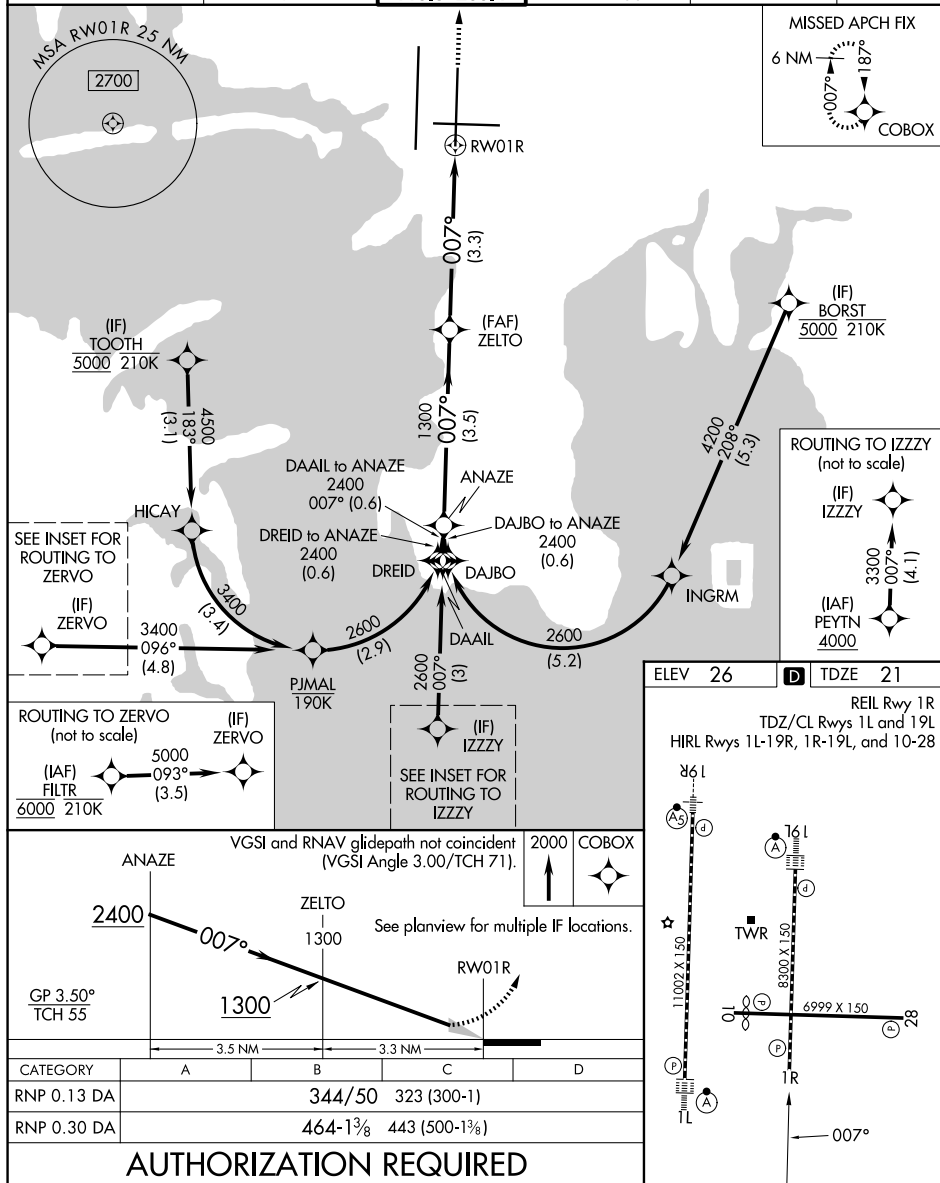
RNAV (RNP) Z RWY 1R  
TAMPA INTL (TPA)

RNP AR APCH - GPS.

**T** Simultaneous approach authorized. For uncompensated Baro-VNAV systems, procedure NA below 4°C or above 48°C.

**MISSED APPROACH:** Climb to 2000 direct COBOX and hold.

|        |        |         |               |             |             |          |       |
|--------|--------|---------|---------------|-------------|-------------|----------|-------|
| ARR    | D-ATIS | DEP     | TAMPA APP CON | TAMPA TOWER | GND CON     | CLNC DEL | CPDLC |
| 126.45 |        | 128.475 | 118.5 307.175 | 119.5 269.4 | 121.7 269.4 | 133.6    |       |



TAMPA, FLORIDA  
Orig 17APR25

27°59'N-82°32'W

TAMPA INTL (TPA)  
RNAV (RNP) Z RWY 1R

SE-3, 07 AUG 2025 to 04 SEP 2025