

WAAS  
CH **70520**  
**W28A**

APP CRS  
**277°**

Rwy Ldg  
TDZE **26**  
Apt Elev **26**

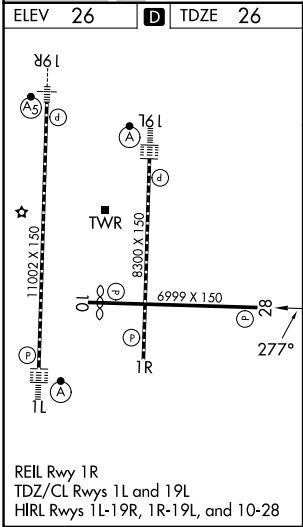
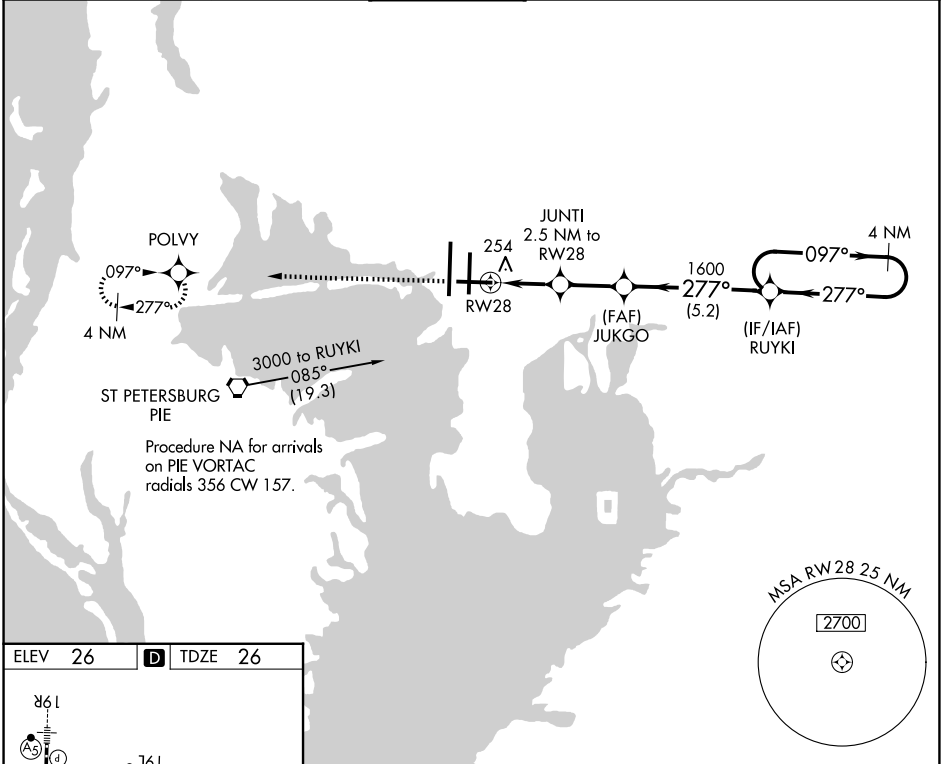
**RNAV (GPS) RWY 28**

TAMPA INTL (TPA)

For uncompensated Baro-VNAV systems, LNAV/VNAV NA below -15°C (5°F) or above 43°C (109°F).  
DME/DME RNP-0.3 NA. Helicopter visibility reduction below ¾ SM NA.

MISSED APPROACH: Climb to 2000 direct POLVY and hold.

ARR <b>126.45</b>	D-ATIS <b>128.475</b>	TAMPA APP CON <b>118.5 307.175</b>	TAMPA TOWER <b>119.5 269.4</b>	GND CON <b>121.7 269.4</b>	CLNC DEL <b>133.6</b>	CPDLC
----------------------	--------------------------	---------------------------------------	-----------------------------------	-------------------------------	--------------------------	-------



2000	POLVY	JUKGO	RUYKI	4 NM Holding Pattern
* LNAV only.	JUNTI 2.5 NM to RWY 28	1600	277°	097° → 2000
	860*	1600	← 277°	GP 3.00° TCH 50
	2.5 NM	2.3 NM	5.2 NM	
CATEGORY	A	B	C	D
LPV DA		389-1½	363 (400-1½)	
LNAV/VNAV DA		468-1½	442 (500-1½)	
LNAV MDA	520-1	494 (500-1)	520-1¾	494 (500-1¾)
CIRCLING	600-1	574 (600-1)	680-1¾ 654 (700-1¾)	980-3 954 (1000-3)

SE-3, 07 AUG 2025 to 04 SEP 2025

SE-3, 07 AUG 2025 to 04 SEP 2025