

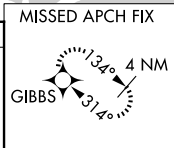
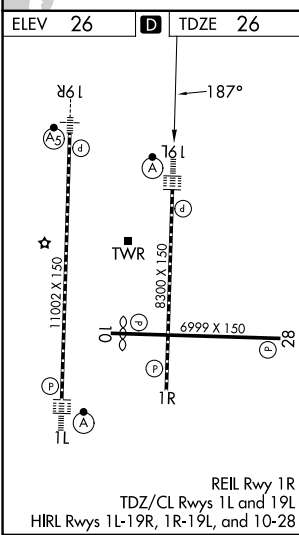
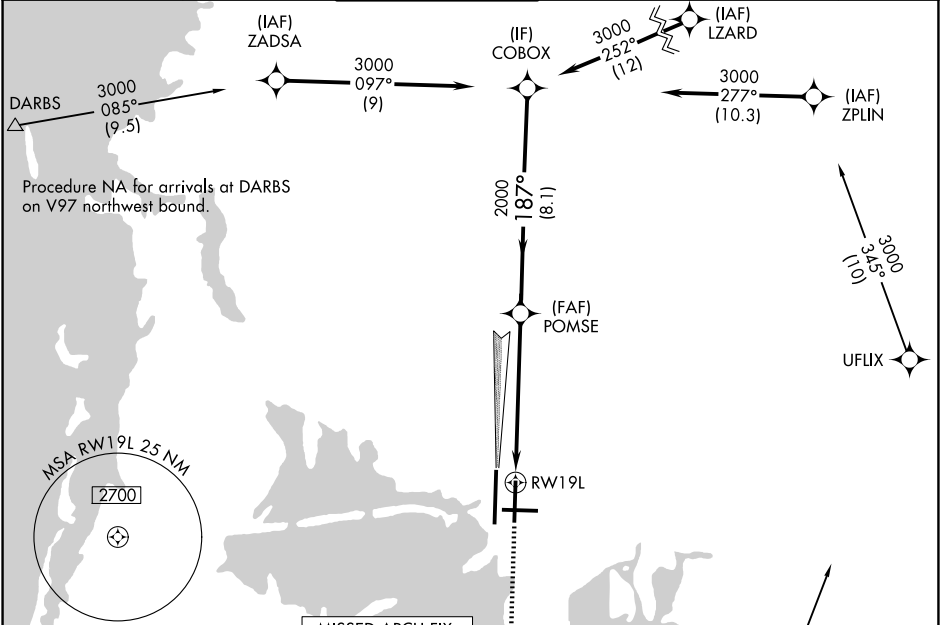
WAAS CH 49100 W19A	APP CRS 187°	Rwy Ldg TDZE 26 Apt Elev 26
--	------------------------	---

RNAV (GPS) RWY 19L

TAMPA INTL (TPA)

RNP APCH - GPS.			ALSIF-2	MISSED APPROACH: Climb to 2000 direct CUPUL and on track 147° to GIBBS and hold.
▼ LNAV procedure NA during simultaneous operations. For uncompensated Baro-VNAV systems, LNAV/VNAV NA below 4°C or above 54°C. Simultaneous approach authorized. ▲ Use of FD or AP required during simultaneous operations. For inop ALS, increase LNAV/VNAV visibility all Cats to RVR 6000, and LNAV visibility Cat C/D to 1½ SM.				

ARR 126.45	D-ATIS	DEP 128.475	TAMPA APP CON 118.5 307.175	TAMPA TOWER 119.5 269.4	GND CON 121.7 269.4	CLNC DEL 133.6	CPDLC
-------------------	--------	--------------------	------------------------------------	--------------------------------	----------------------------	-----------------------	-------



2000	CUPUL	GIBBS	VGSI and RNAV glidepath not coincident (VGSI Angle 3.00/TCH 74).	
			POMSE	COBOX
GP 3.00° TCH 51				
CATEGORY	A	B	C	D
LPV DA	226/18 200 (200-½)			
LNAV/VNAV DA	440/40 414 (500-¾)			
LNAV MDA	520/24	494 (500-½)	520/50	494 (500-1)
CIRCLING	600-1	574 (600-1)	680-1¾ 654 (700-1¾)	980-3 954 (1000-3)