

LOC/DME I-TPA 110.3 Chan 40	APP CRS 187°	Rwy Ldg 8300 TDZE 26 Apt Elev 26
---	------------------------	---

ILS or LOC RWY 19L
TAMPA INTL (TPA)

RADAR required for procedure entry.

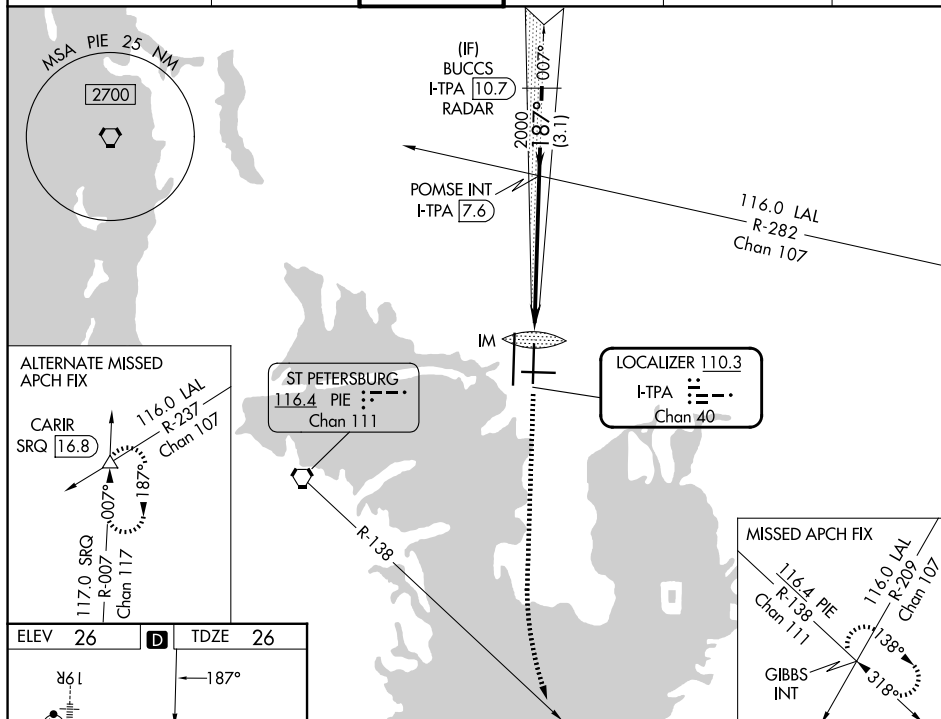
T Simultaneous approach authorized. For inop ALS, increase S-ILS 19L Cat E visibility to RVR 4000 and S-LOC 19L Cat C, D, and E visibility to 1 3/4 SM.

ALSF-2



MISSED APPROACH: Climb to 600 then climbing left turn to 4000 on heading 160° and on PIE VORTAC R-138 to GIBBS INT and hold.

ARR	D-ATIS	DEP	TAMPA APP CON	TAMPA TOWER	GND CON	CLNC DEL	CPDLC
126.45		128.475	118.5 307.175	119.5 269.4	121.7 269.4	133.6	



ELEV	26	D	TDZE	26
REIL Rwy 1R TDZ/CL Rwys 1L and 19L HIRL Rwys 1L-19R, 1R-19L, and 10-28				
FAF to MAP 6.0 NM				
Knots	60	90	120	150 180
Min:Sec	6:00	4:00	3:00	2:24 2:00

600 ↑	4000 hdg 160°	PIE R-138	GIBBS INT		VGS1 and ILS glidepath not coincident (VGS1 Angle 3.00/TCH 74).		BUCCS I-TPA <u>10.7</u> RADAR
CATEGORY	A	B	C	D	E		
S-ILS 19L	226/18 200 (200-½)						
S-LOC 19L	520/24	494 (500-½)	520/50		494 (500-1)		
CIRCLING	600-1	574 (600-1)	680-1¾ 654 (700-1¾)	980-3 954 (1000-3)	NA		