

LOC/DME I-TPA	APP CRS	Rwy Ldg	8300
110.3	187°	TDZE	26
Chan 40		Apt Elev	26

ILS RWY 19L (SA CAT I)
TAMPA INTL (TPA)

RADAR required for procedure entry.

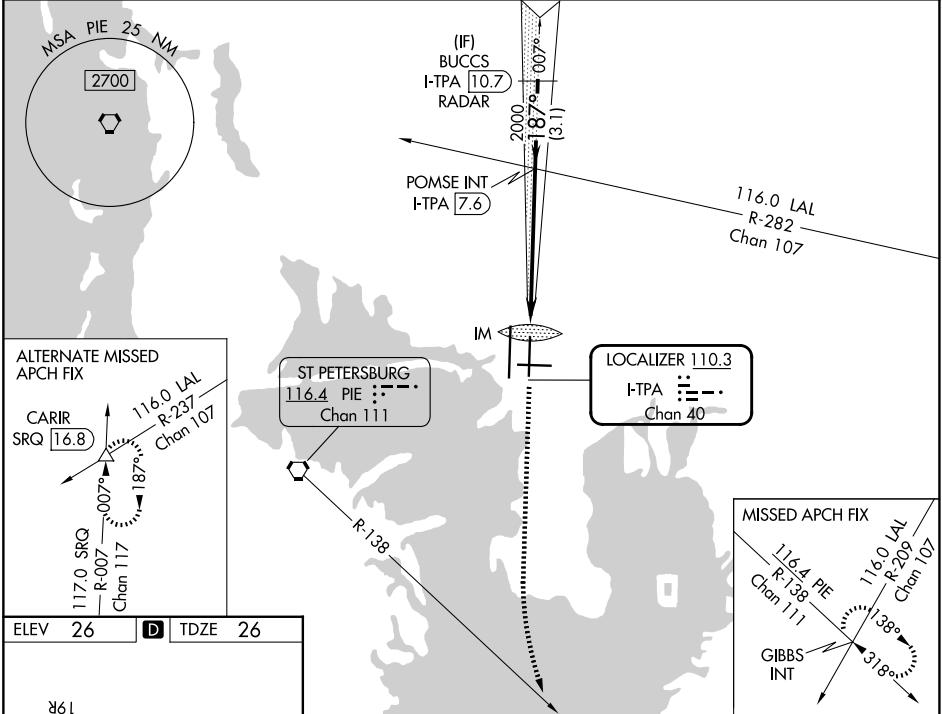
Simultaneous approach authorized.

Requires specific OPSPEC, MSPEC, or LOA approval.

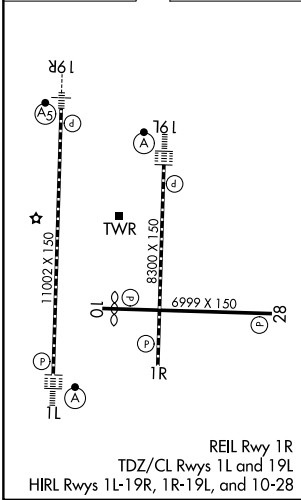
ALSIF-2

MISSED APPROACH: Climb to 600 then climbing left turn to 4000 on heading 160° and on PIE VORTAC R-138 to GIBBS INT and hold.

ARR	D-ATIS	DEP	TAMPA APP CON	TAMPA TOWER	GND CON	CLNC DEL	CPDLC
126.45	128.475		118.5 307.175	119.5 269.4	121.7 269.4	133.6	



ELEV	26	TDZE	26
------	----	------	----



600	4000	PIE	GIBBS	VGSI and ILS glidepath not coincident (VGSI Angle 3.00/TCH 74).
hdg 160°	R-138	INT		
POMSE INT I-TPA 7.6				
BUCCS I-TPA 10.7				
RADAR				
2000				
3000				
GS 3.00°				
TCH 51				
IM				
6 NM				
3.1 NM				
1048'				
CATEGORY				
S-ILS 19L				
RA 150/14				
150				
DA 176				

SA CATEGORY I ILS- SPECIAL AIRCREW & AIRCRAFT CERTIFICATION REQUIRED

SE-3, 07 AUG 2025 to 04 SEP 2025

SE-3, 07 AUG 2025 to 04 SEP 2025