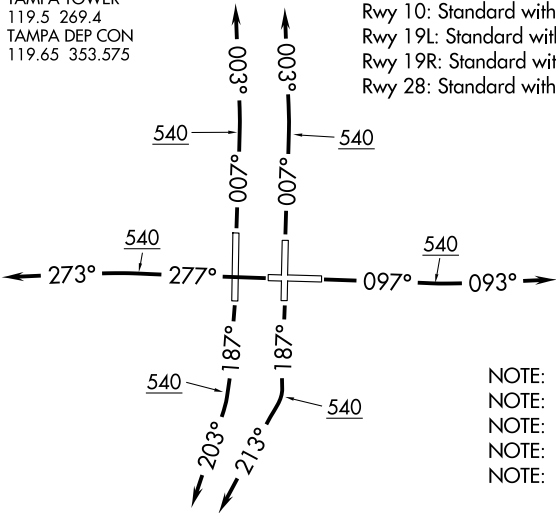


D-ATIS DEP
128.475
CLNC DEL
133.6
CPDLC
GND CON
121.7 269.4
TAMPA TOWER
119.5 269.4
TAMPA DEP CON
119.65 353.575

TOP ALTITUDE:
6000

TAKEOFF MINIMUMS:

- Rwy 1L: Standard with minimum climb of 500' per NM to 3800.
- Rwy 1R: Standard with minimum climb of 500' per NM to 3900.
- Rwy 10: Standard with minimum climb of 500' per NM to 4200.
- Rwy 19L: Standard with minimum climb of 500' per NM to 4400.
- Rwy 19R: Standard with minimum climb of 500' per NM to 4400.
- Rwy 28: Standard with minimum climb of 500' per NM to 4300.



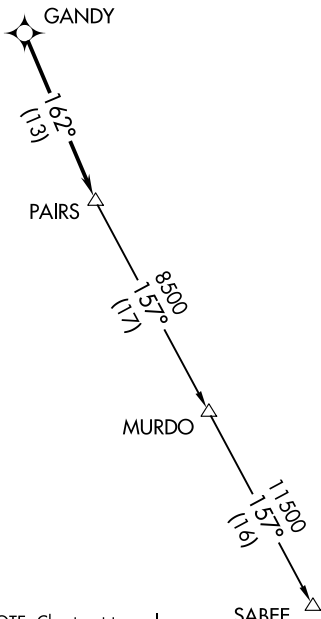
- NOTE: RNAV 1.
NOTE: Jets only.
NOTE: RADAR required.
NOTE: DME/DME/IRU or GPS required.
NOTE: Rwy 1L/1R expect left turn to GANDY.

DEPARTURE ROUTE DESCRIPTION

- TAKEOFF RWY 1L/R: Climb on heading 007° to 540, then climb to assigned altitude on heading 003° or as assigned by ATC, thence. . . .
- TAKEOFF RWY 10: Climb on heading 097° to 540, then climb to assigned altitude on heading 093° or as assigned by ATC, thence. . . .
- TAKEOFF RWY 19L: Climb on heading 187° to 540, then climb to assigned altitude on heading 213° or as assigned by ATC, thence. . . .
- TAKEOFF RWY 19R: Climb on heading 187° to 540, then climb to assigned altitude on heading 203° or as assigned by ATC, thence. . . .
- TAKEOFF RWY 28: Climb on heading 277° to 540, then climb to assigned altitude on heading 273° or as assigned by ATC, thence. . . .

. . . .expect RADAR vectors to GANDY, then on track 162° to PAIRS. Maintain 6000 or as assigned by ATC, expect clearance to filed altitude within ten (10) minutes after departure.

SABEE TRANSITION (GANDY8.SABEE)



NOTE: Chart not to scale.