

TACAN RWY 34

TACAN TCM Chan 33	APCH CRS 347°	Rwy Idg 10,108 TDZE 322 Arpt Elev 322
-----------------------------	-------------------------	--

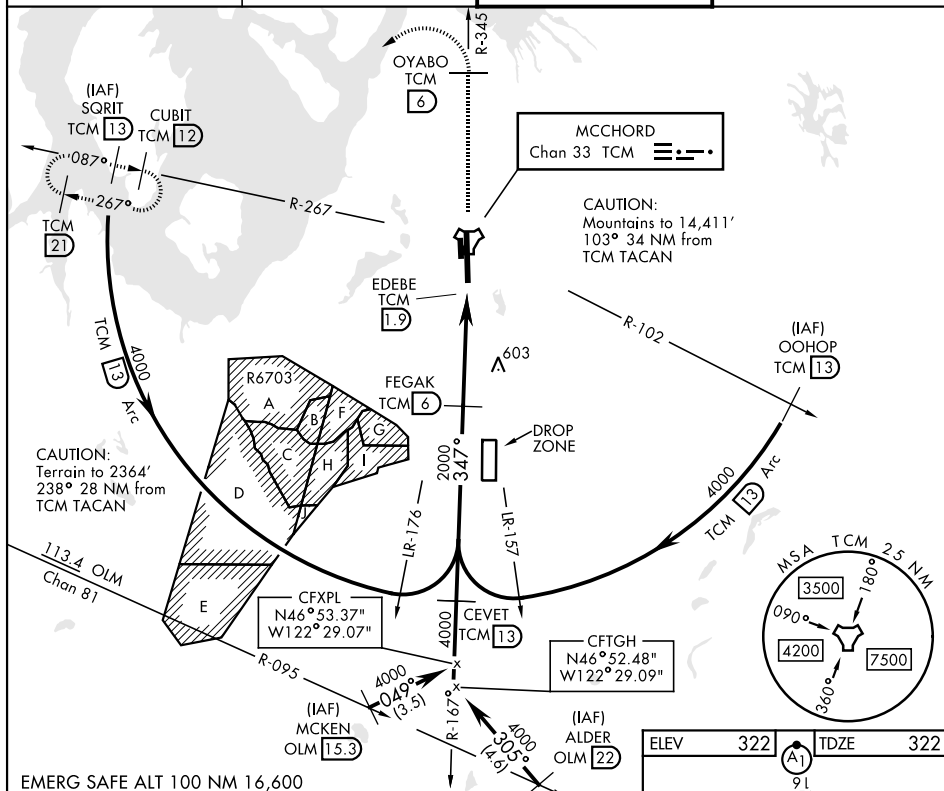
[USAF] MCCHORD FLD (JOINT BASE LEWIS MCCHORD) (KTCM)

T * When ALS inop, increase CAT AB RVR to 55, vis to 1 mile, CAT CD vis to 1½ miles.
 ** Circling not authorized E of Rwy 16-34.



MISSED APPROACH: Climb to 4000 on TCM TACAN R-345 to OYABO, then turn left via 215° course to intercept TCM R-267 to CUBIT and hold. Cross OYABO at or above 3000. Continue climb-in-hold to 4000.

ATIS	SEATTLE APP CON	TOWER	GND CON
135.825 270.1	126.5 377.15	124.8 259.3	118.175 279.65



CATEGORY	A	B	C	D
S-34 *	860/24	538 (600-½)	860/55	538 (600-1)
CIRCLING **	940-1	618 (700-1)	940-1½ 618 (700-1½)	940-2 618 (700-2)

