

TACAN RWY 16

TACAN TCM Chan 33	APCH CRS 160°	Rwy Idg 10,108 TDZE 286 Arpt Elev 322
-------------------	---------------	---

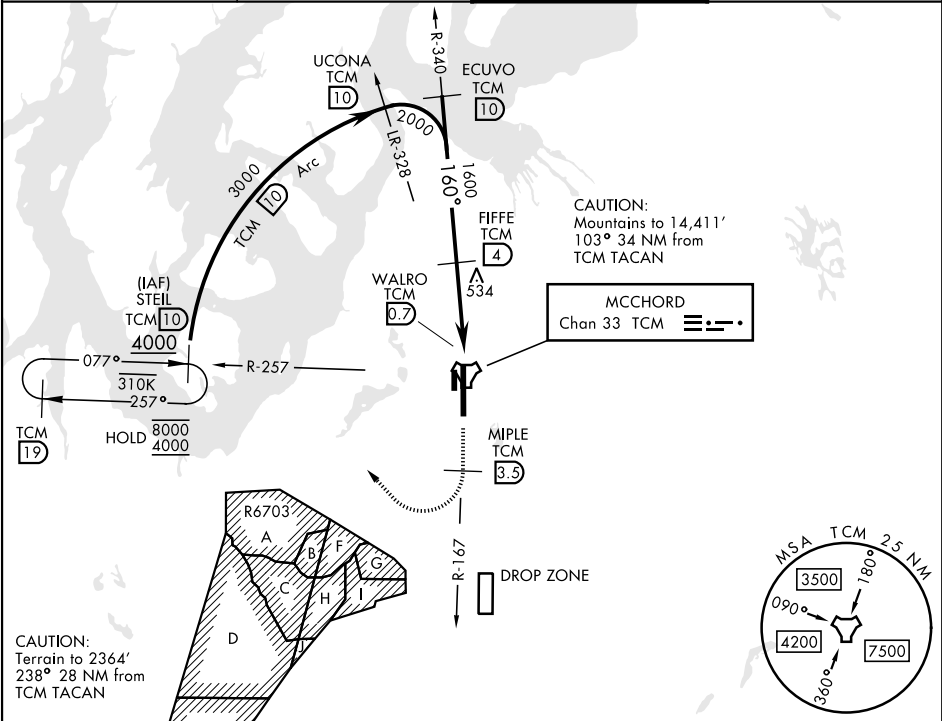
[USAF] MCCORD FLD (JOINT BASE LEWIS MCCORD) (KTCM)

▼ \* When ALS inop, increase CAT AB RVR to 55, vis to 1 mile, CAT CDE vis to 1½ miles.  
\*\* Circling not authorized E of Rwy 16-34.

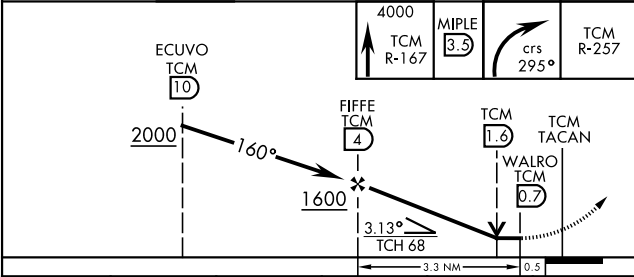


MISSED APPROACH: Climb to 4000 on TCM TACAN R-167. At TCM 3.5 DME turn right via 295° course to intercept TCM R-257 to STEIL and hold, continue climb-in-hold to 4000.

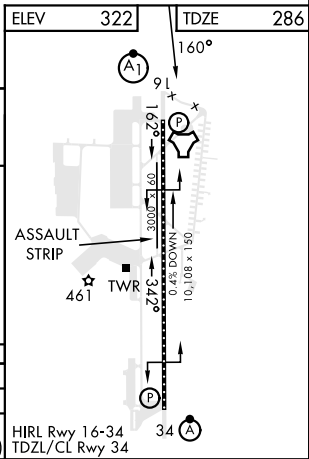
ATIS 135.825 270.1	SEATTLE APP CON 126.5 377.15	TOWER 124.8 259.3	GND CON 118.175 279.65
--------------------	------------------------------	-------------------	------------------------



ELEV 322	TDZE 286
----------	----------



CATEGORY	A	B	C	D	E
S-16 *	800/24	514 (500-½)	800/55	514	(500-1)
CIRCLING **	940-1 618 (700-1)	940-1 618 (700-1½)	940-2 618 (700-2)	940-2 618 (700-2)	1020-2½ 698 (700-2½)



TACAN RWY 16

NW-1, 07 AUG 2025 to 04 SEP 2025

NW-1, 07 AUG 2025 to 04 SEP 2025