

RNAV (GPS) RWY 34

APCH CRS	Rwy Idg
345°	10,108
TDZE	322
Arpt Elev	322

[USAF] MCCHORD FLD (JOINT BASE LEWIS MCCHORD) (KTCM)

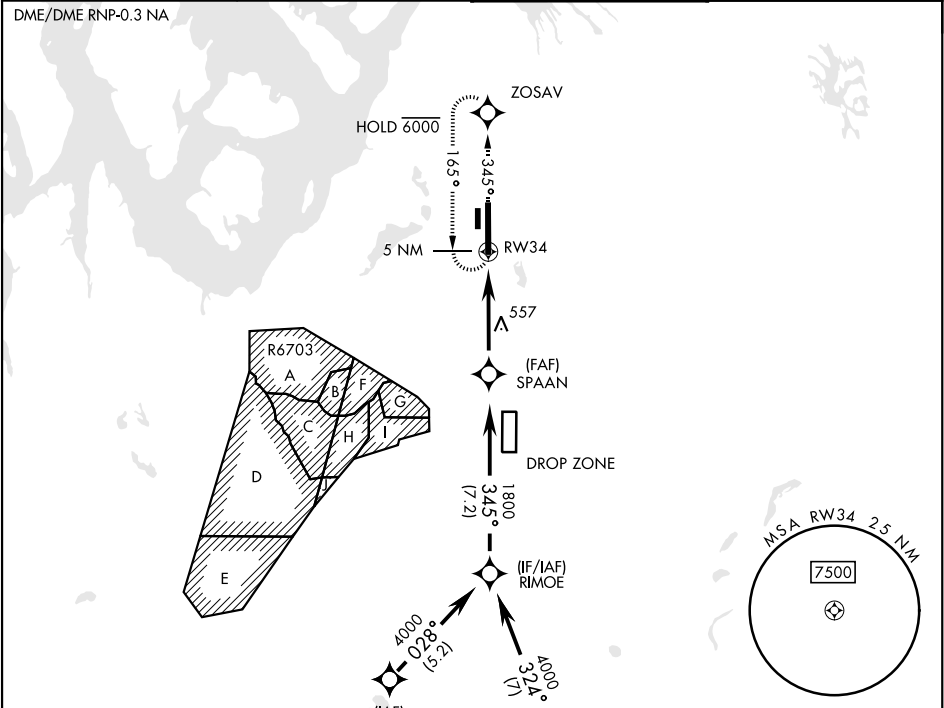
RADAR required.

▼ \* When ALS inop, increase CAT AB RVR to 55, vis to 1 mile; CAT CDE vis to 1½ miles.  
\*\* Circling not authorized E of rwy 16-34.

ALSF-2

MISSED APPROACH: Climb to 4000 direct ZOSAV and hold, continue climb in hold to 4000.

ATIS 135.825 270.1	SEATTLE APP CON 126.5 377.15	TOWER 124.8 259.3	GND CON 118.175 279.65
-----------------------	---------------------------------	----------------------	---------------------------



EMERG SAFE ALT 100 NM 16,600

4000 ZOSAV

1.4 NM to RW34

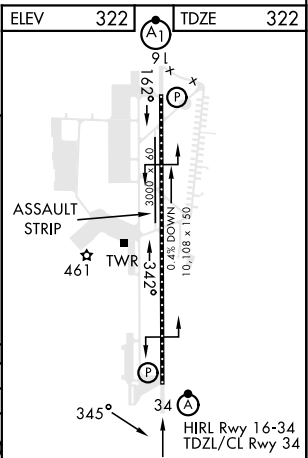
SPAAN

1800

345°

3.04° TCH 59

CATEGORY	A	B	C	D	E
LNAV MDA *	820/24	498 (500-½)	820/50	498 (500-1)	
CIRCLING **	940-1	618 (700-1)	940-1½ 618 (700-1½)	940-2 618 (700-2)	1020-2½ 698 (700-2½)



RNAV (GPS) RWY 34

NW-1, 07 AUG 2025 to 04 SEP 2025

NW-1, 07 AUG 2025 to 04 SEP 2025