

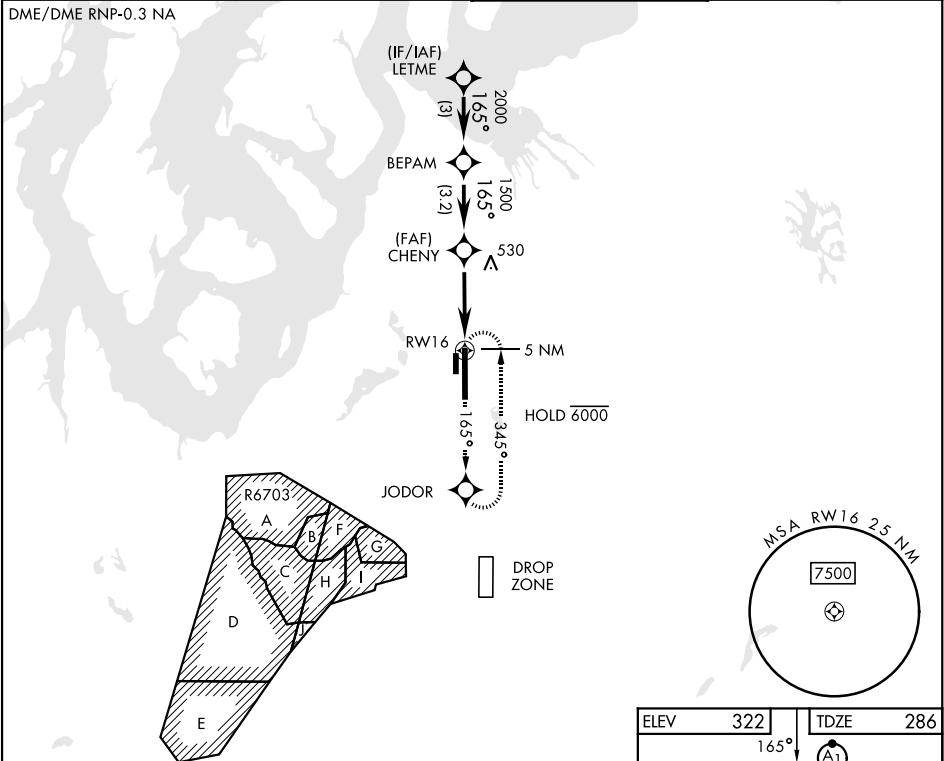
RNAV (GPS) RWY 16

APCH CRS	Rwy Idg
165°	10,108
TDZE	286
Arpt Elev	322

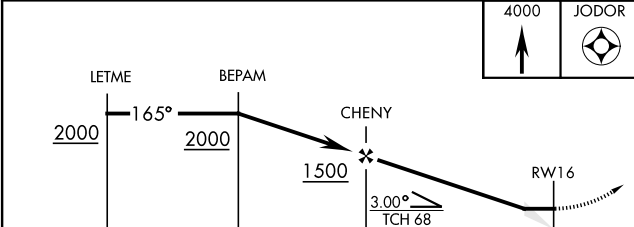
[USAF] MCCHORD FLD (JOINT BASE LEWIS MCCHORD) (KTCM)

RADAR required	ALSF-1	MISSED APPROACH: Climb to 4000 direct JODOR and hold. Continue climb in hold to 4000.
* When ALS inop, increase CAT AB vis to 1 mile, CAT CDE vis to 1 3/8 miles. ** Circling not authorized E of rwy 16-34.		

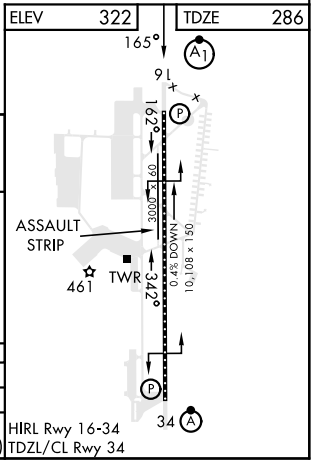
ATIS 135.825 270.1	SEATTLE APP CON 126.5 377.15	TOWER 124.8 259.3	GND CON 118.175 279.65
-----------------------	---------------------------------	----------------------	---------------------------



EMERG SAFE ALT 100 NM 16,600



CATEGORY	A	B	C	D	E
LNAV MDA *	780/24	494 (500-1/2)	780/50	494 (500-1)	
CIRCLING **	940-1	618 (700-1)	940-1 3/4 618 (700-1 3/4)	940-2 618 (700-2)	1020-2 1/2 698 (700-2 1/2)



RNAV (GPS) RWY 16

NW-1, 07 AUG 2025 to 04 SEP 2025

NW-1, 07 AUG 2025 to 04 SEP 2025