


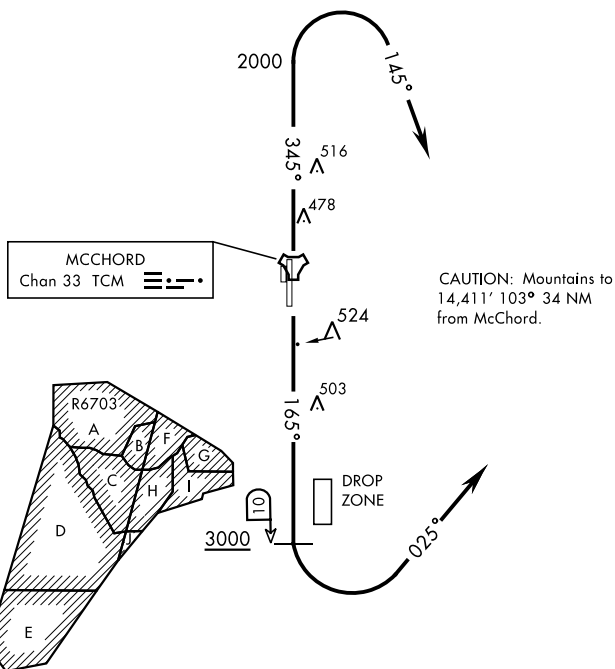
ATIS
135.825 270.1
GND CON
118.175 279.65
TOWER
124.8 259.3
SEATTLE DEP CON
126.5 377.15

If unable to make ATC charted crossing
restriction advise ATC prior to departure.

Maximum 250 KIAS
Radar vectors required within 10 NM after departure.



SEATTLE
116.8 SEA
Chan 115



DEPARTURE ROUTE DESCRIPTION

TAKEOFF RWY 16: Climb on track 165° to cross TCM TACAN 10 DME at or above 3000. Then turn left tracking 025° to expect radar vectors. Maintain ATC assigned altitude.

TAKEOFF RWY 34: Climb on track 345° to 2000, then turn right tracking 145° to expect radar vectors. Maintain ATC assigned altitude.