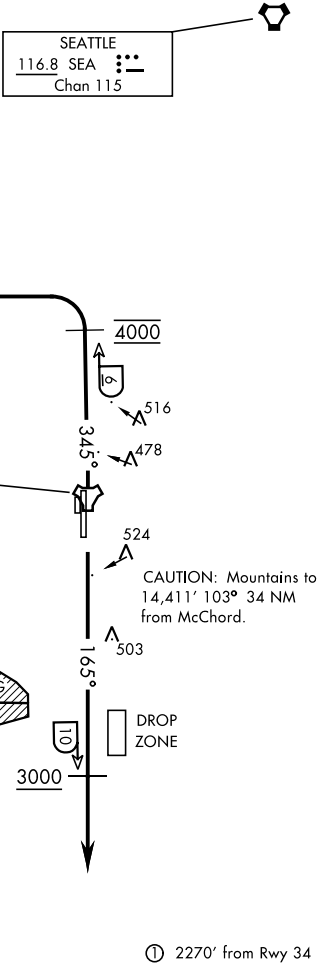


ATIS  
135.825 270.1  
GND CON  
118.175 279.65  
TOWER  
124.8 259.3  
SEATTLE DEP CON  
126.5 377.15

If unable to make ATC charted crossing  
restrictions advise ATC prior to departure.

Maximum 250 KIAS



**DEPARTURE ROUTE DESCRIPTION**

TAKEOFF RWY 16: Climb on track of 165° to cross TCM TACAN 10 DME at or above 3000. Expect radar vectors within TCM 8 DME. Maintain ATC assigned altitude.

TAKEOFF RWY 34: Climb on track 345° to cross TCM TACAN 6 DME at 4000. Then turn left tracking 255° to expect radar vectors. Maintain ATC assigned altitude.

NW-1, 07 AUG 2025 to 04 SEP 2025

NW-1, 07 AUG 2025 to 04 SEP 2025