

DEPARTURE ROUTE DESCRIPTION

TAKEOFF RUNWAY 16: Climb on heading 165° , then climbing left turn direct to cross **ALDER** at or above 5800 and at or below 9000, then on track 111° to MOCAA, thence

TAKEOFF RUNWAY 34: Climb on heading 345° to 3000, then climbing left turn indirect NEECE, then on track 188° to cross NISQA at 4000, then on track 129° to cross KUSCE at or above 4000 and at or below 250K, then on track 086° to cross ALDER at or above 5800 and at or below 9000, then on track 111° to MOCAA, thence

... (transition). Maintain 9000, expect filed altitude five minutes after departure.

BAKER CITY TRANSITION (MOCAA4.BKE)

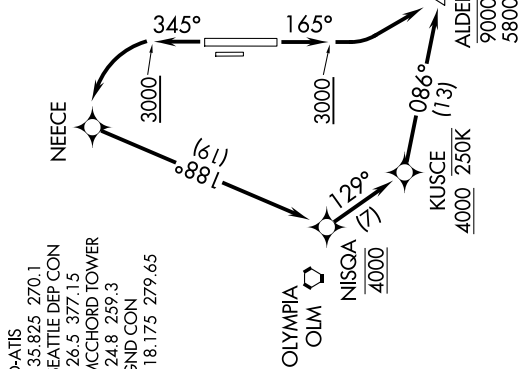
JINMO TRANSITION (MOCAA4.JINMO)

KIMBERLY TRANSITION (MOCAA4.IMB)

TAKEOFF MINIMUMS

Rwy 16: Standard with minimum climb of 500' per NM to 3000.

Rwy 34: Standard with minimum climb of 500' per NM to 3000.



NOTE: RNAV 1.

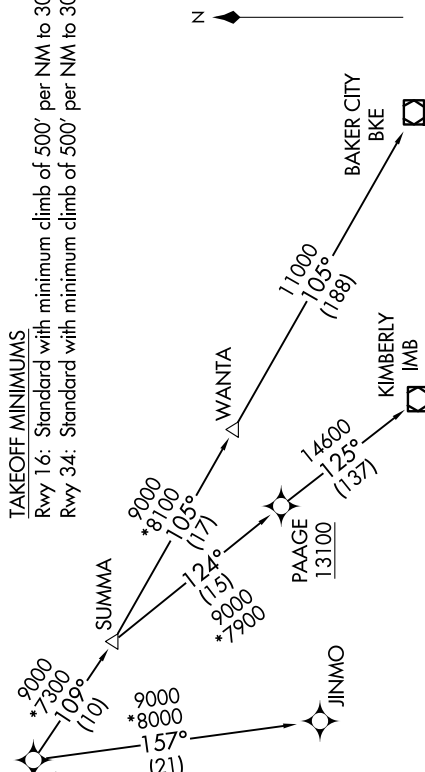
NOTE: GPS required.

NOTE: Chart not to scale.

TOP ALTITUDE:

BAKER CITY and JINMO Transitions: 9000

KIMBERLY Transition: 13100



NW-1, 07 AUG 2025 to 04 SEP 2025