

TACOMA, WASHINGTON

## ILS or LOC RWY 16

[USAF] MCCORD FLD (JOINT BASE LEWIS MCCORD) (KTCM)

LOC I-MAR <b>109.9</b>	APCH CRS <b>165°</b>	Rwy Idg <b>10,108</b> TDZE <b>286</b> Arpt Elev <b>322</b>
---------------------------	-------------------------	--

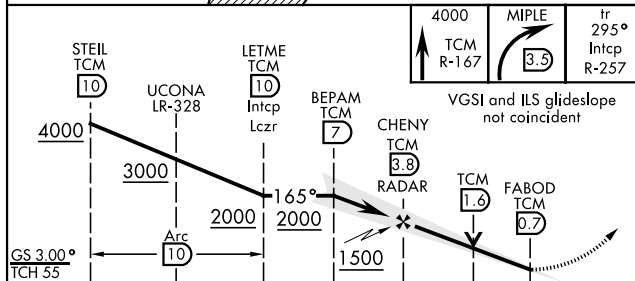
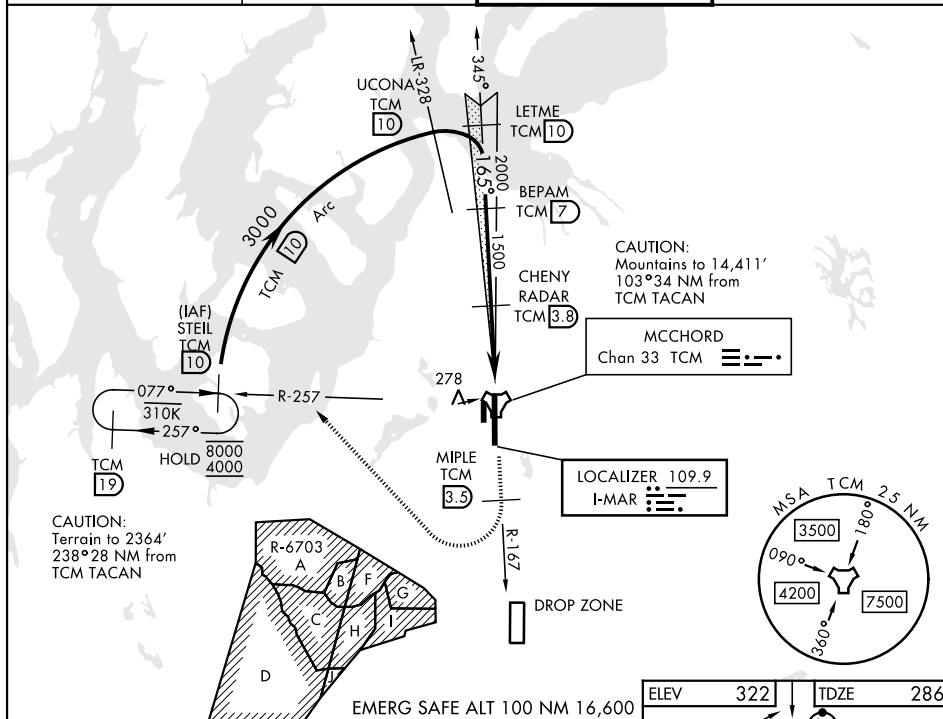
RADAR or DME required.

- ▼ \* When ALS inop, increase RVR to 45, vis to  $\frac{7}{8}$  mile.  
 \*\* When ALS inop, increase CAT AB RVR to 55, vis to 1 mile, CAT CDE vis to  $\frac{1}{8}$  miles.  
 \*\*\* Circling not authorized E of Rwy 16-34.

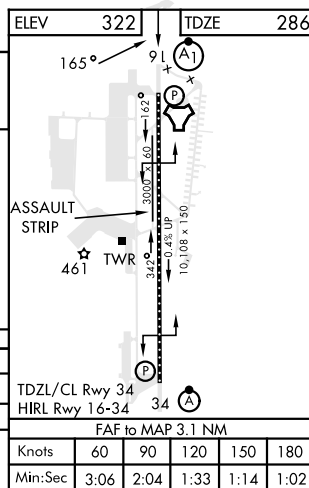


MISSED APPROACH: Climb to 4000 on TCM TACAN R-167. At 3.5 DME turn right via 295° course to intercept TCM R-257 to STEIL and hold. Continue climb in hold to 4000.

ATIS <b>135.825 270.1</b>	SEATTLE APP CON <b>126.5 377.15</b>	TOWER <b>124.8 259.3</b>	GND CON <b>118.175 279.65</b>
------------------------------	--	-----------------------------	----------------------------------



CATEGORY	A	B	C	D	E
S-ILS 16 *	601/40		315	(300-¾)	
S-LOC 16 **	860/40	574 (600-¾)	860-1¼	574	(600-1¼)
CIRCLING ***	940-1	618 (700-1)	940-1¾ 618 (700-1¾)	940-2 (700-2)	1020-2½ 698 (700-2½)



TACOMA, WASHINGTON

47°08'N-122°29'W MCCORD FLD (JOINT BASE LEWIS MCCORD) (KTCM)

Amdt 5 20APR23

## ILS or LOC RWY 16

NW-1, 07 AUG 2025 to 04 SEP 2025