


TACOMA, WASHINGTON

ILS RWY 34 (CAT II)

LOC I-TCM <u>108.5</u>	APCH CRS 345°	Rwy Idg 10,108 TDZE 322 Arpt Elev 322
----------------------------------	-------------------------	--

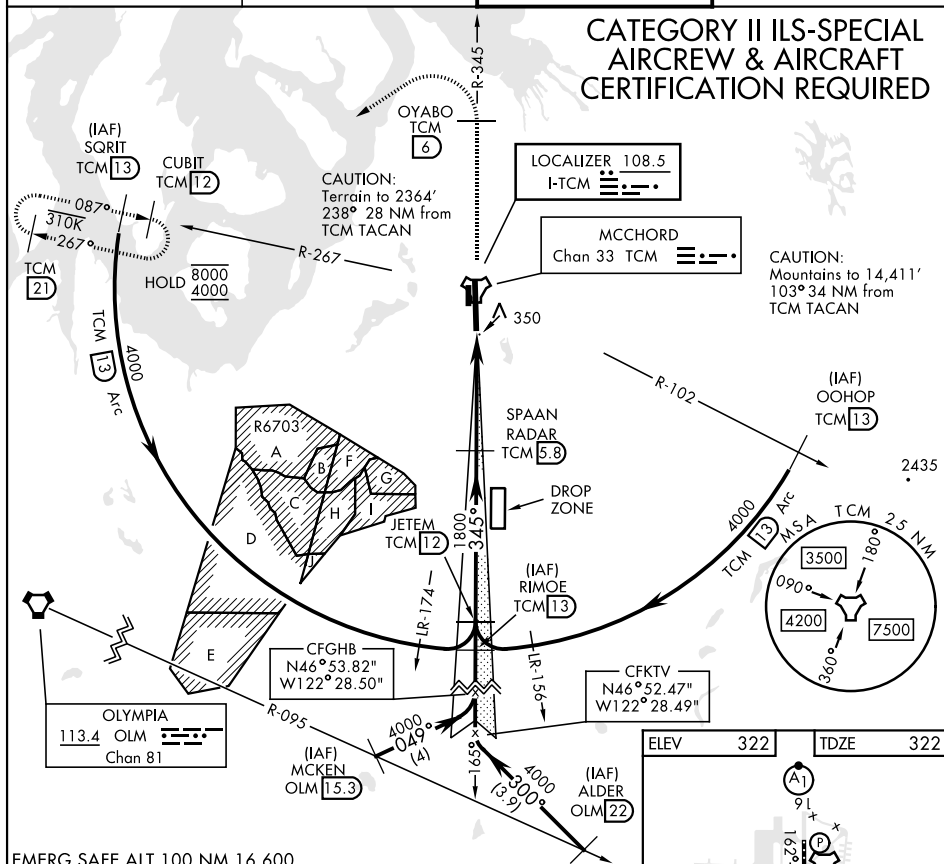
[USAF]

MCCHORD FLD (JOINT BASE LEWIS MCCHORD) (KTCM)

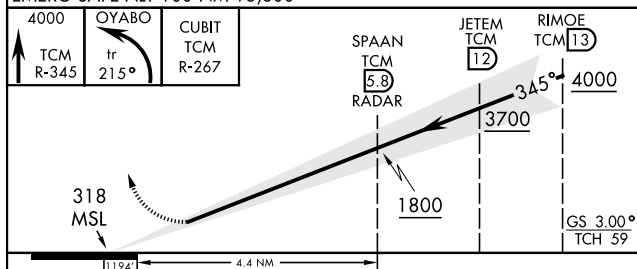
	ALSF-2	MISSED APPROACH: Climb to 4000 on TCM TACAN R-345 to OYABO, then turn left via 215° course to intercept TCM R-267 to CUBIT and hold, continue climb in hold to 4000. Cross OYABO at or above 3000.
---	--------	--

ATIS 135.825 270.1	SEATTLE APP CON 126.5 377.15	TOWER 124.8 259.3	GND CON 118.175 279.65
-----------------------	---------------------------------	----------------------	---------------------------

CATEGORY II ILS-SPECIAL
AIRCREW & AIRCRAFT
CERTIFICATION REQUIRED

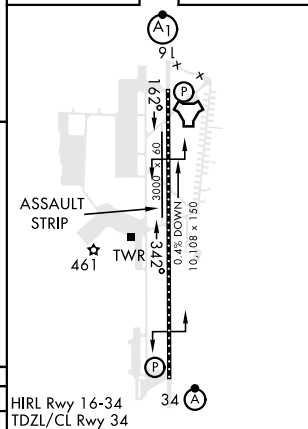


EMERG SAFE ALT 100 NM 16,600



CATEGORY	A	B	C	D	E
S-ILS 34	RA 139/12		100	DA 422	

ELEV	322		TDZE	322
------	-----	--	------	-----



TACOMA, WASHINGTON

47°08'N-122°29'W

MCCHORD FLD (JOINT BASE LEWIS MCCHORD) (KTCM)

Amdt 4 10SEP20

ILS RWY 34 (CAT II)

NW-1, 07 AUG 2025 to 04 SEP 2025

NW-1, 07 AUG 2025 to 04 SEP 2025