

FORT LEWIS, WASHINGTON

RNAV (GPS) RWY 33

APCH CRS	Rwy Idg	6124
331°	TDZE	301
	Arprt Elev	301

- (USA)

GRAY AAF (JOINT BASE LEWIS MCCHORD) (KGRF)

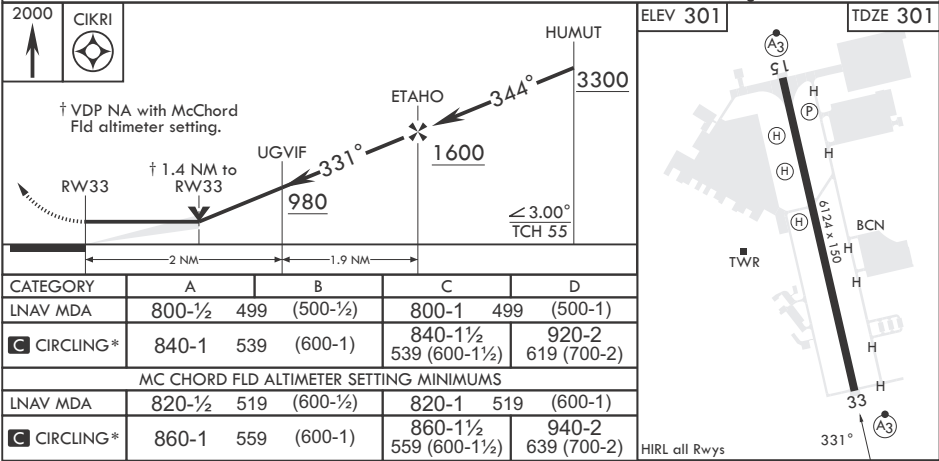
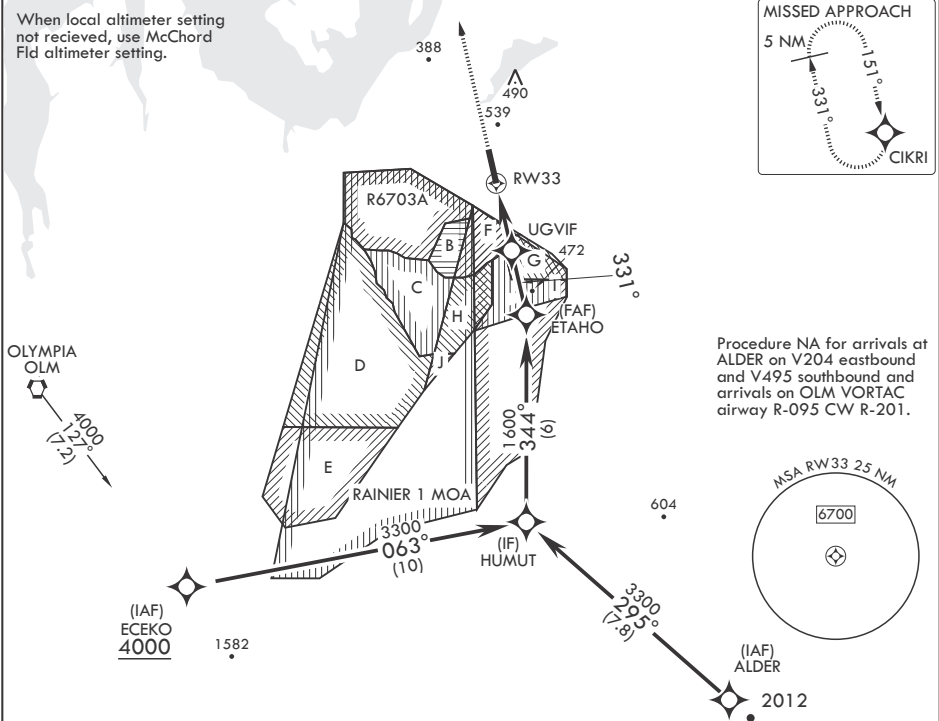
RNP APCH

* Circling not authorized W of Rwy 15-33.



MISSSED APPROACH: Climb to 2000 direct CIKRI and hold.

ATIS 124.65 306.2	SEATTLE APP CON/DEP CON 120.1 290.9	TOWER ★ 119.325 (CTAF) 256.8	GND CON 121.9 290.2	CLNC DEL 121.9 290.2
----------------------	--	---------------------------------	------------------------	-------------------------



FORT LEWIS, WASHINGTON

47°05'N - 122°35'W GRAY AAF (JOINT BASE LEWIS MCCHORD) (KGRF)

Amdt 3 10AUG23

RNAV (GPS) RWY 33

NW-1, 07 AUG 2025 to 04 SEP 2025

NW-1, 07 AUG 2025 to 04 SEP 2025