

APCH CRS	Rwy Idg	6124
151°	TDZE	300
	Arprt Elev	301

- (USA)

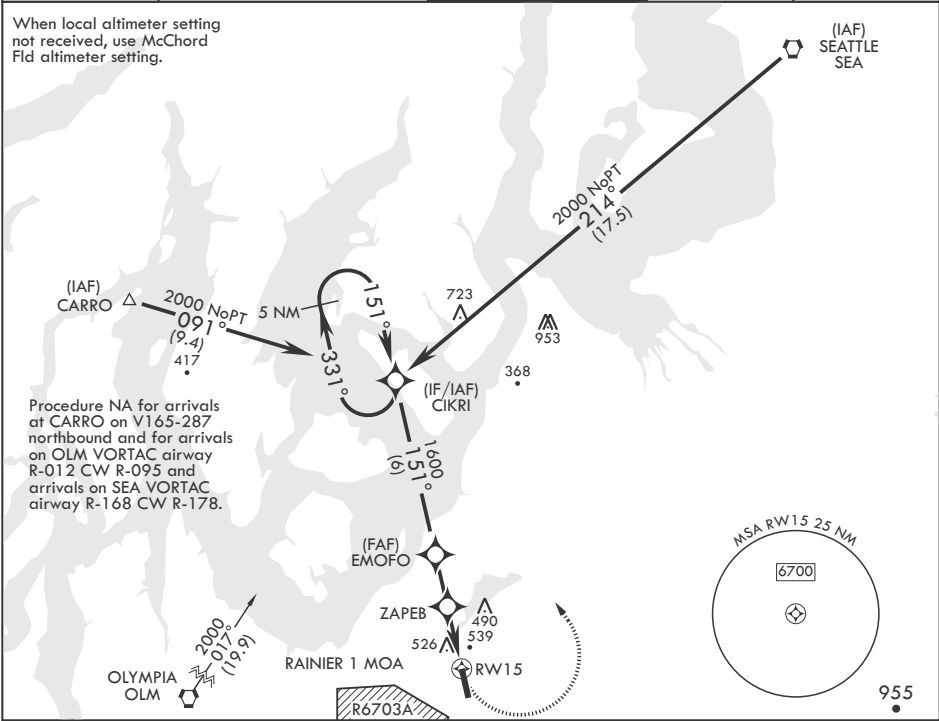
RNAV (GPS) RWY 15

GRAY AAF (JOINT BASE LEWIS MCCHORD) (KGRF)

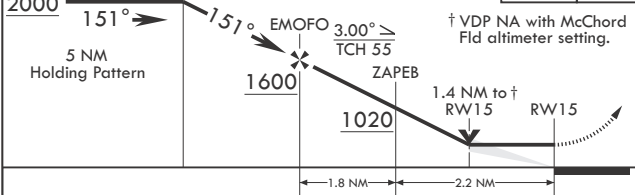
RNP APCH	SSALR	MISSED APPROACH: Climbing left turn to 2000 direct CIKRI and hold.
▼ * Circling not authorized W of Rwy 15-33.		

ATIS	SEATTLE APP CON/DEP CON	TOWER ★	GND CON	CLNC DEL
124.65 306.2	120.1 290.9	119.325 (CTAF) 256.8	121.9 290.2	121.9 290.2

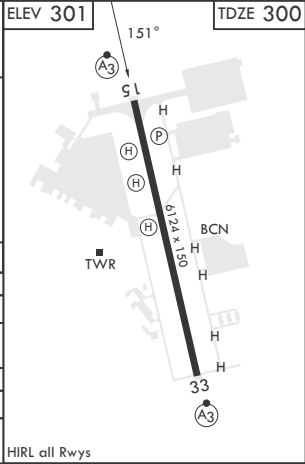
When local altimeter setting not received, use McChord Fld altimeter setting.



2000	CIKRI	VGSI and descent angles not coincident.	2000	CIKRI	ELEV 301	TDZE 300
5 NM Holding Pattern						



CATEGORY	A	B	C	D
LNAV MDA	800/24	500 (500-½)	800/50	500 (500-1)
CIRCLING*	840-1	539 (600-1)	840-1½ 539 (600-1½)	920-2 619 (700-2)
MC CHORD FLD ALTIMETER SETTING MINIMUMS				
LNAV MDA	820/24	520 (600-½)		
CIRCLING*	860-1	559 (600-1)	860-1½ 559 (600-1½)	940-2 639 (700-2)



RNAV (GPS) RWY 15

NW-1, 07 AUG 2025 to 04 SEP 2025

NW-1, 07 AUG 2025 to 04 SEP 2025