

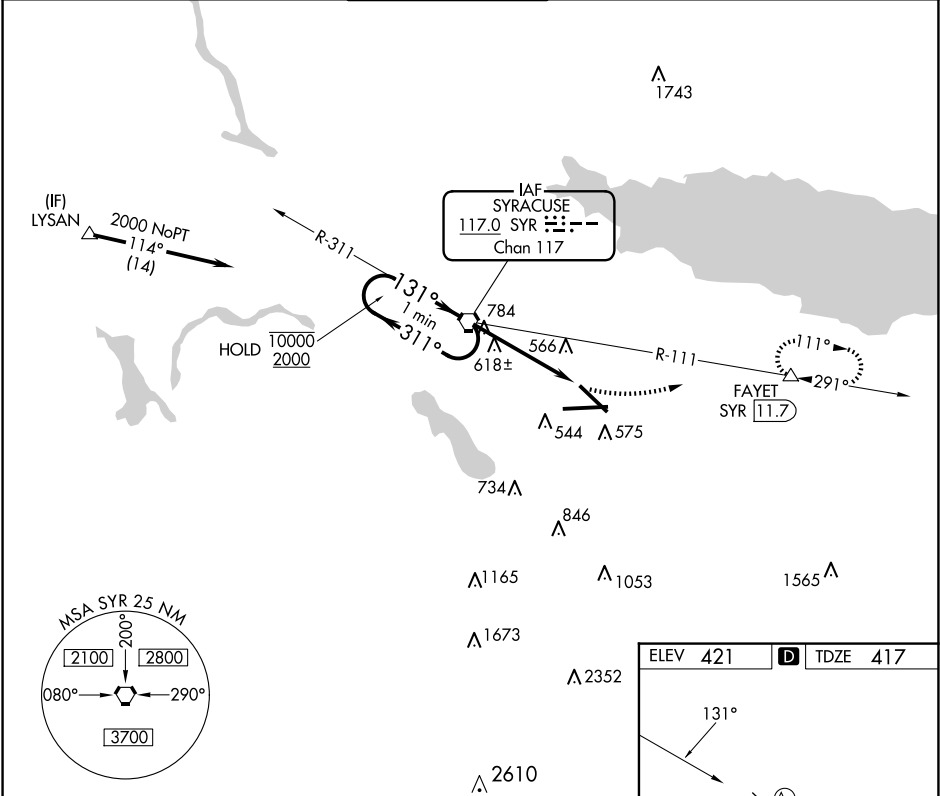
VORTAC SYR	APP CRS	Rwy Idg	7499
117.0	131°	TDZE	417
Chan 117		Apt Elev	421

VOR RWY 15

SYRACUSE HANCOCK INTL (SYR)

DME required.	MALS	MISSED APPROACH: Climbing left turn to 3200 on SYR VORTAC R-111 to FAYET/11.7 DME and hold, continue climb-in-hold to 3200.
<div><div>▼</div><div>Rwy 15 helicopter visibility reduction below ¾ SM NA.</div><div>▲</div><div>For inop ALS, increase Cat C/D visibility to 1¾ SM.</div></div>	<div><div>A4</div><div></div></div>	

ATIS	SYRACUSE APP CON	SYRACUSE TOWER	GND CON	CLNC DEL
124.225	126.125 269.125	120.3 239.0	121.7 348.6	125.05 257.775



One Minute Holding Pattern		SYR VORTAC	3200	SYR R-111	FAYET
<div><div>10000</div><div>2000</div><div>← 311°</div><div>131° →</div><div>2000</div></div>		<div><div>131°</div><div>1 min</div><div>311°</div></div>	<div><div>3200</div><div>SYR</div><div>3.3</div></div>	<div><div>SYR</div><div>4.7</div></div>	<div><div>△</div></div>
		<div><div>3.09° ≥</div><div>TCH 53</div></div>	<div><div>3.3 NM</div></div>	<div><div>1.4</div></div>	
CATEGORY	A	B	C	D	
S-15	920-¾ 503 (500-¾)		920-1¼ 503 (500-1¼)		
CIRCLING	920-1 499 (500-1)		1020-1½ 599 (600-1½)		1180-2½ 759 (800-2½)

ELEV 421	TDZE 417
<div><div>131°</div><div>5.1</div><div>A4</div><div>7499 X 150</div><div>0.3% UP</div><div>9013 X 150</div><div>28</div><div>35</div></div>	
TDZ/CL Rwy 28	
HIRL Rwy 10-28 and 15-33	
FAF to MAP 4.7 NM	
Knots	60 90 120 150 180
Min:Sec	4:42 3:08 2:21 1:53 1:34