

VORTAC SYR	APP CRS	Rwy Idg	7499
117.0	314°	TDZE	409
Chan 117		Apt Elev	421

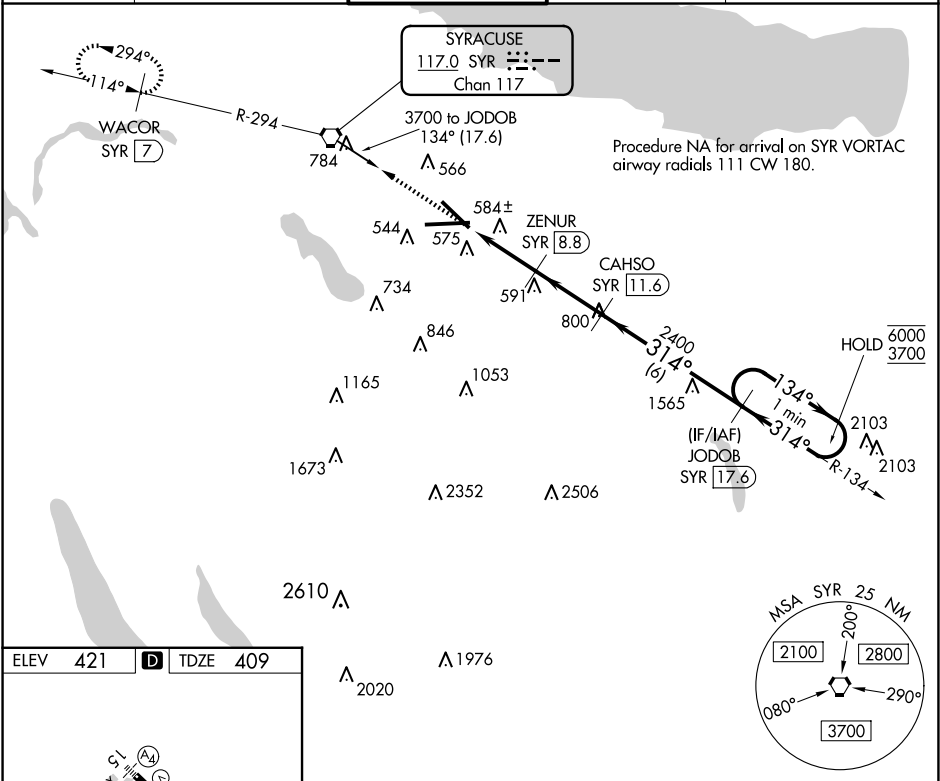
TACAN RWY 33

SYRACUSE HANCOCK INTL (SYR)

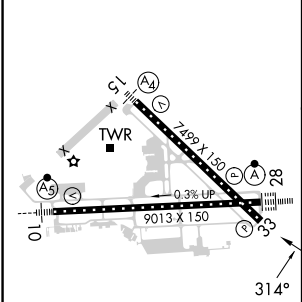
Rwy 33 helicopter visibility reduction below ¾ SM NA.

MISSED APPROACH: Climb to 3000 direct SYR VORTAC and on SYR VORTAC R-294 to WACOR/7 DME and hold.

ATIS	SYRACUSE APP CON	SYRACUSE TOWER	GND CON	CLNC DEL
124.225	126.125 269.125	120.3 239.0	121.7 348.6	125.05 257.775



ELEV 421	D	TDZE 409
----------	---	----------



TDZ/CL Rwy 28	HIRL Rwy 10-28 and 15-33
---------------	--------------------------

3000	SYR	SYR R-294	WACOR SYR 7	CAHSO SYR 11.6	JODOB SYR 17.6	One Minute Holding Pattern
			ZENUR SYR 8.8			
	SYR 5.9	SYR 7.1	TCH 53	2400	134° → 6000	← 314° 3700
	1.2	1.7 NM	2.8 NM	6 NM		
CATEGORY	A	B	C	D		
S-33	840/55	431 (500-1)	840-1¼	431 (500-1¼)		
CIRCLING	900-1 479 (500-1)	920-1 499 (500-1)	1020-1½ 599 (600-1½)	1180-2½ 759 (800-2½)		

NE-2, 07 AUG 2025 to 04 SEP 2025

NE-2, 07 AUG 2025 to 04 SEP 2025