

SYRACUSE, NEW YORK

AL-411 (FAA)

25107

WAAS CH <b>40017</b> <b>W10A</b>	APP CRS <b>100°</b>	Rwy Idg <b>9013</b> TDZE <b>421</b> Apt Elev <b>421</b>
--	------------------------	---

## RNAV (GPS) Z RWY 10

SYRACUSE HANCOCK INTL (SYR)

RNP APCH - GPS.
-----------------

**⚠** For uncompensated Baro-VNAV systems, LNAV/ VNAV NA below -19°C or above 54°C. For inop ALS, increase LNAV Cats C/D visibility to RVR 5500. # RVR 1800 authorized with use of FD or AP or HUD to DA.

MALSR



**MISSED APPROACH:** Climb to 3200 direct STODA and hold, continue climb-in-hold to 3200.

ATIS 124.225	SYRACUSE APP CON 126.125 269.125	SYRACUSE TOWER 120.3 239.0	GND CON 121.7 348.6	CLNC DEL 125.05 257.775
-----------------	-------------------------------------	-------------------------------	------------------------	----------------------------

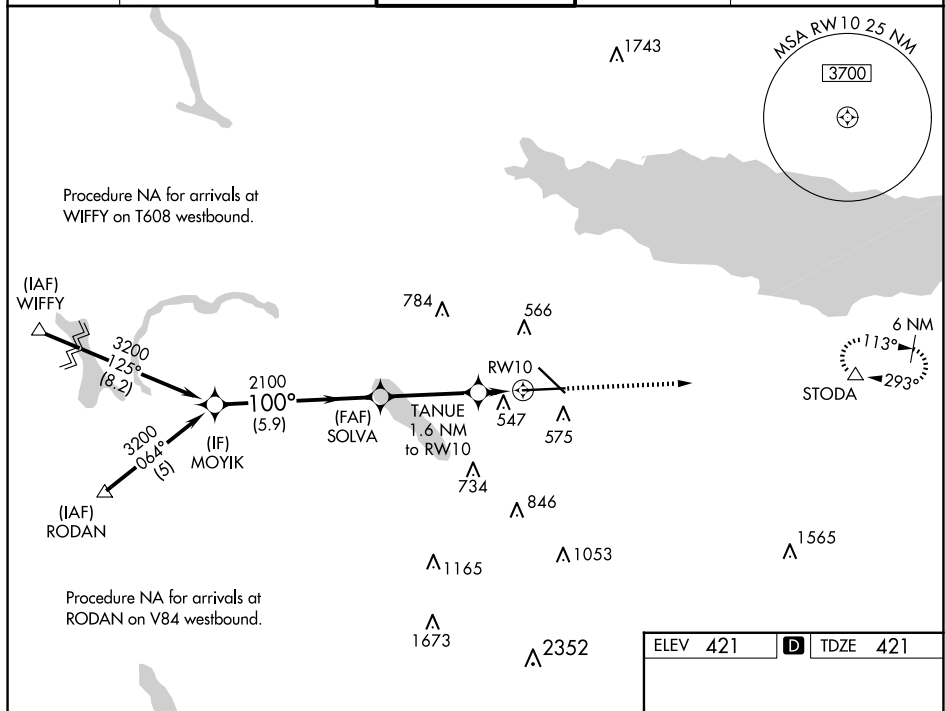
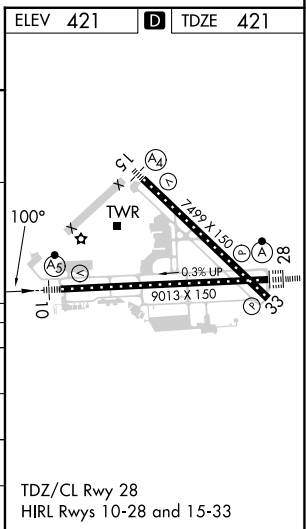


Diagram illustrating a flight path for a Circling Maneuver. The path starts at a 3200 MSL altitude, descends at 100° to a 2100 MSL altitude, then continues to a 1980 MSL altitude. The path is divided into four segments: A (5.9 NM), B (3.5 NM), C (0.6 NM), and D (1 NM). The path ends at a 1980 MSL altitude. The diagram also shows a 3200 MSL altitude, a 2100 MSL altitude, and a 1980 MSL altitude. The path is labeled with 'MOYIK', 'SOLVA', 'TANUE', and 'STODA'. The path is also labeled with 'GP 3.00° TCH 55', '100°', '2100', '1980', '5.9 NM', '3.5 NM', '0.6 NM', and '1 NM'.



SYRACUSE, NEW YORK

Amdt 3A 20APR23

SYRACUSE HANCOCK INTL (SYR)

43°07'N-76°06'W

## RNAV (GPS) Z RWY 10

NE-2, 07 AUG 2025 to 04 SEP 2025