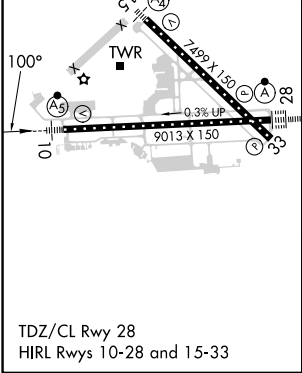
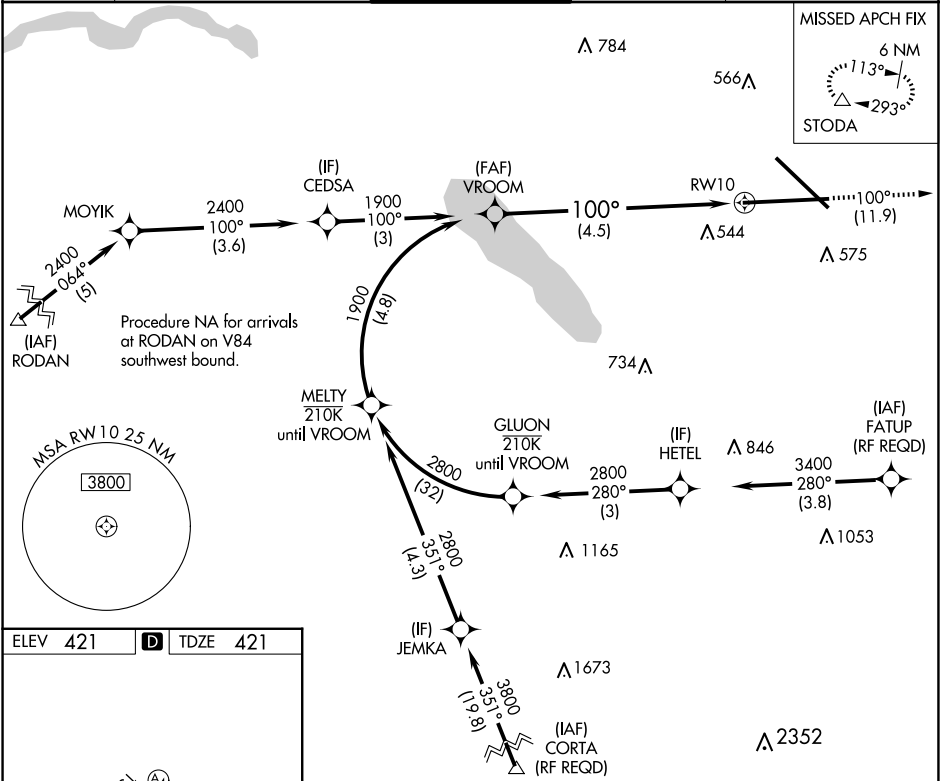


APP CRS	Rwy Idg	9013
100°	TDZE	421
	Apt Elev	421

RNAV (RNP) Y RWY 10
SYRACUSE HANCOCK INTL (SYR)

RNP AR APCH.	MALSR	MISSED APPROACH:
For uncompensated Baro-VNAV systems, procedure NA below -18°C or above 54°C. For inop ALS, increase RNP 0.15 all Cats visibility to 1½. For inop ALS, increase RNP 0.30 all Cats visibility to 1¾.		Climb to 3000 on track 100° to STODA and hold.

ATIS	SYRACUSE APP CON	SYRACUSE TOWER	GND CON	CLNC DEL
124,225	126.125 269.125	120.3 239.0	121.7 348.6	125.05 257.775



VROOM		See planview for multiple IF locations.		3000	STODA
1900		100°		↑	△
1900		4.5 NM		RWY 10	
CATEGORY	A	B	C	D	
RNP 0.15 DA	816/45		395 (400-7%)		
RNP 0.30 DA	881/55		460 (500-1)		
AUTHORIZATION REQUIRED					