

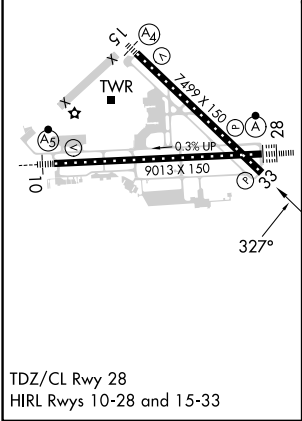
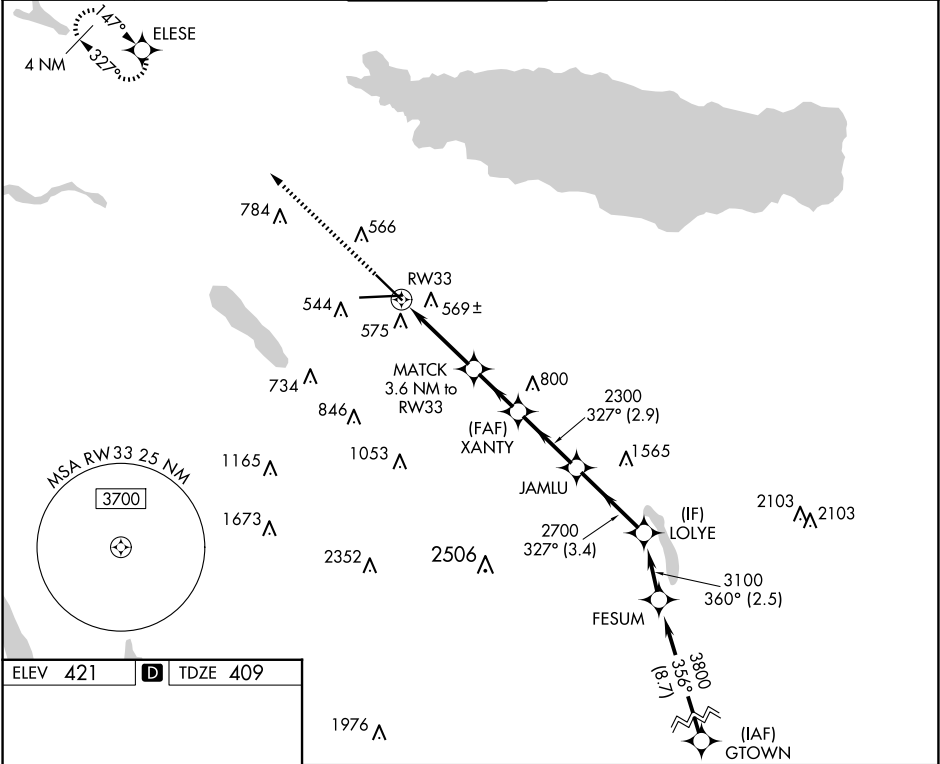
WAAS CH 81823 W33A	APP CRS 327°	Rwy Idg TDZE Apt Elev	7499 409 421
--	------------------------	-----------------------------	---

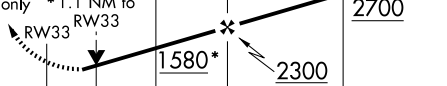
RNAV (GPS) RWY 33

SYRACUSE HANCOCK INTL (SYR)

RNP APCH.		MISSED APPROACH: Climb to 3000 direct ELESE and hold.	
▼ Rwy 33 helicopter visibility reduction below ¾ SM NA. For uncompensated			
▲ Baro-VNAV systems, LNAV/VNAV NA below -20°C or above 54°C.			

ATIS 124.225	SYRACUSE APP CON 126.125 269.125	SYRACUSE TOWER 120.3 239.0	GND CON 121.7 348.6	CLNC DEL 125.05 257.775
------------------------	--	--------------------------------------	-------------------------------	-----------------------------------



3000 ↑		ELESE ✦		MATCH 3.6 NM to RW33		XANTY 2300		JAMLU 2700		LOLYE 3100	
* LNAV only		* 1.1 NM to RW33		1580*		2300		327°		GP 3.00° TCH 50	
		1.1 NM		2.5 NM		2.2 NM		2.9 NM		3.4 NM	
CATEGORY		A		B		C		D			
LPV DA		715/45 306 (300-7½)									
LNAV/ VNAV DA		882-1⅓ 473 (500-1⅓)									
LNAV MDA		820/55 411 (400-1)				820/60 411 (400-1¼)					
CIRCLING		900-1 479 (500-1)		920-1 499 (500-1)		1020-1½ 599 (600-1½)		1180-2½ 759 (800-2½)			