
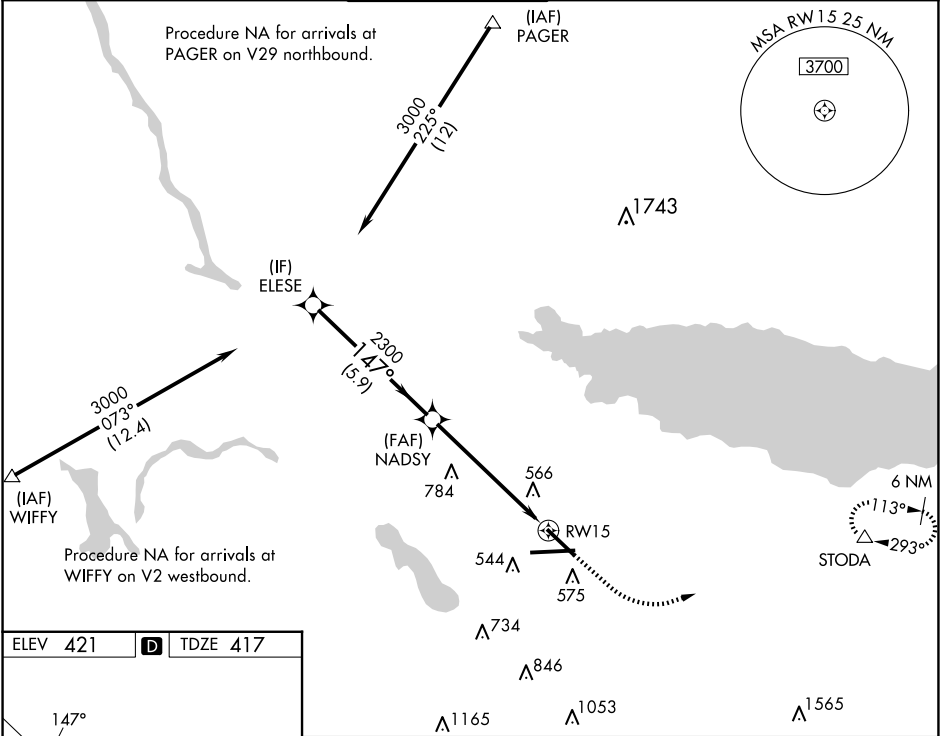


WAAS CH <b>50117</b> <b>W15A</b>	APP CRS <b>147°</b>	Rwy Idg TDZE <b>417</b> Apt Elev <b>421</b>
--	------------------------	---

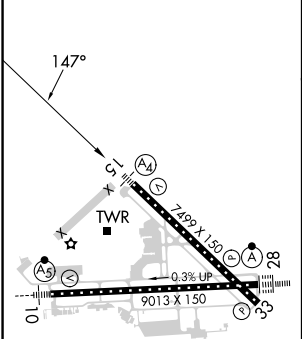
RNAV (GPS) RWY 15

SYRACUSE HANCOCK INTL (SYR)

RNP APCH.			MALSS 	MISSED APPROACH: Climb to 1600 then climbing left turn to 3200 direct STODA and hold, continue climb-in-hold to 3200.
▼ Rwy 15 helicopter visibility reduction below ¾ SM NA. ▲ Inop table does not apply to LPV DA all Cats. For uncompensated Baro-VNAV systems, LNAV/VNAV NA below -19°C or above 54°C.				
ATIS 124.225	SYRACUSE APP CON 126.125 269.125	SYRACUSE TOWER 120.3 239.0	GND CON 121.7 348.6	CLNC DEL 125.05 257.775



ELEV 421	<b>D</b>	TDZE 417
----------	----------	----------



TDZ/CL Rwy 28	
HIRL Rwy 10-28 and 15-33	

ELESE		NADSY		RWY 15	
3000		2300		1600	
147°		2300		STODA	
GP 3.00°		TCH 49		*1.3 NM to RWY 15	
5.9 NM		4.5 NM		*LNAV only.	
CATEGORY	A	B	C	D	
LPV DA	667-¾		250 (300-¾)		
LNAV/VNAV DA	894-1½		477 (500-1½)		
LNAV MDA	880-¾ 463 (500-¾)		880-1½ 463 (500-1½)		
CIRCLING	900-1 479 (500-1)	920-1 499 (500-1)	1020-1½ 599 (600-1½)	1180-2½ 759 (800-2½)	