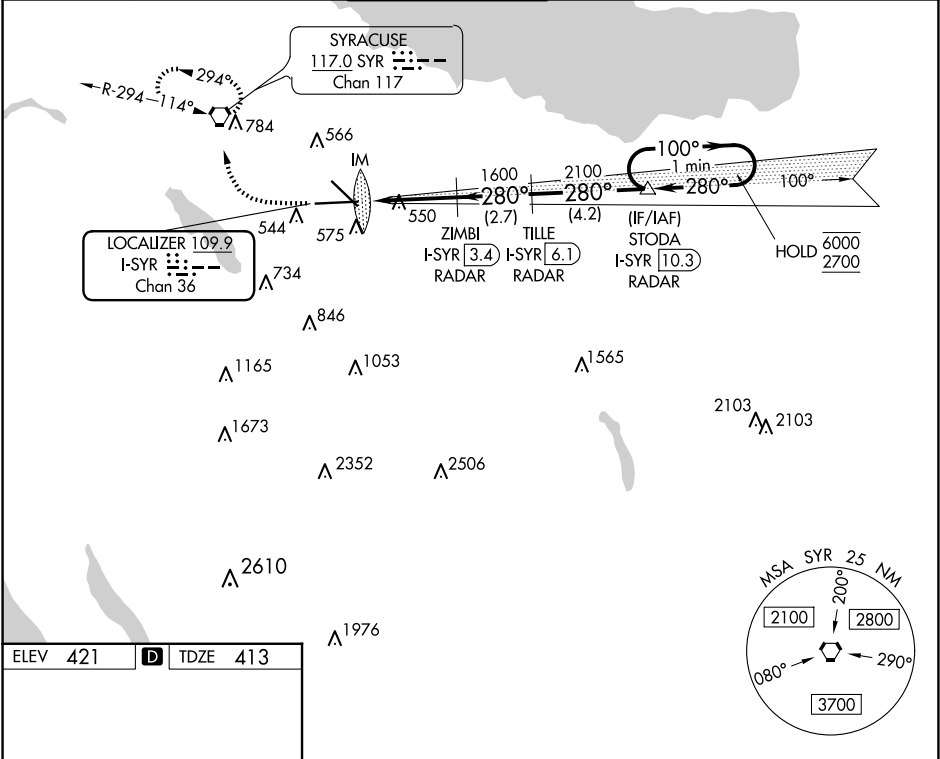


LOC/DME I-SYR 109.9 Chan 36	APP CRS 280°	Rwy Idg TDZE Apt Elev	9013 413 421
---	------------------------	-----------------------------	---

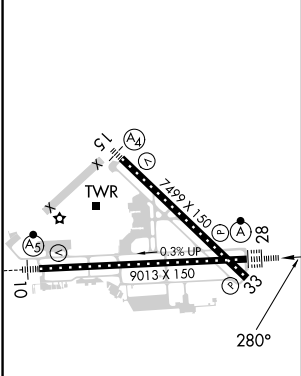
ILS or LOC RWY 28
SYRACUSE HANCOCK INTL (SYR)

DME or RADAR required.		ALS-F-2	MISSED APPROACH: Climb to 1100 then climbing right turn to 3000 direct SYR VORTAC and hold, continue climb-in-hold to 3000.

ATIS 124.225	SYRACUSE APP CON 126.125 269.125	SYRACUSE TOWER 120.3 239.0	GND CON 121.7 348.6	CLNC DEL 125.05 257.775
------------------------	--	--------------------------------------	-------------------------------	-----------------------------------



ELEV 421	D	TDZE 413
----------	---	----------



1100	3000	SYR	*LOC only	STODA I-SYR 10.3 RADAR	One Minute Holding Pattern
				ZIMBI I-SYR 3.4 RADAR	
				TILLE I-SYR 6.1 RADAR	
				I-SYR 0.2	
				*I-SYR 0.9	
				IM	
				1600	
				2100	
				280°	
				100°	
				6000	
				2700	
				GS 3.00°	
				TCH 78	
				0.2	
				0.9	
				2.5 NM	
				2.7 NM	
				4.2 NM	
CATEGORY	A	B	C	D	
S-ILS 28	613/18 200 (200-½)				
S-LOC 28	800/24 387 (400-½) 800/35 387 (400-¾)				
CIRCLING	900-1 479 (500-1)	920-1 499 (500-1)	1020-1½ 599 (600-1½)	1180-2½ 759 (800-2½)	

NE-2, 07 AUG 2025 to 04 SEP 2025

NE-2, 07 AUG 2025 to 04 SEP 2025