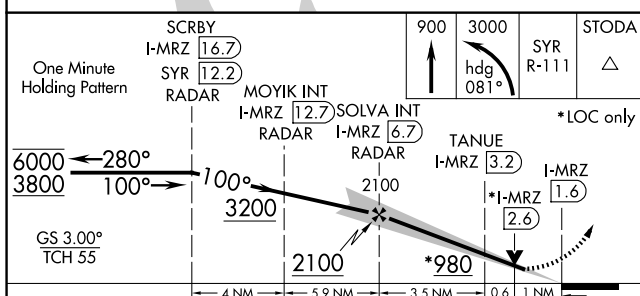
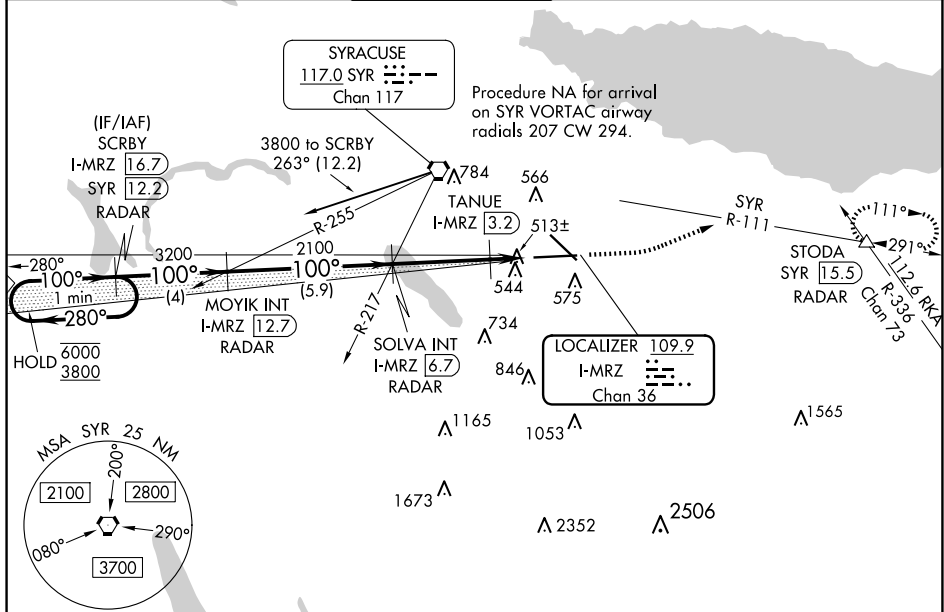




ILS or LOC RWY 10
SYRACUSE HANCOCK INTL (SYR)

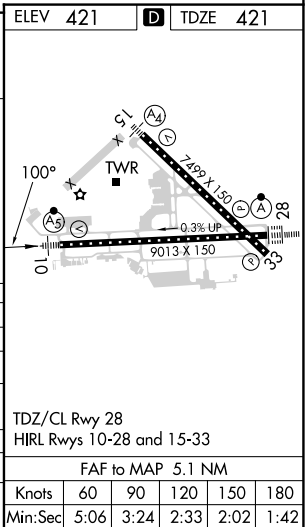
MALSR

MISSED APPROACH: Climb to 900 then climbing left turn to 3000 on heading 081° and on SYR VORTAC R-111 to STODA INT/ SYR VORTAC 15.5 DME/RADAR and hold.

ATIS 124.225	SYRACUSE APP CON 126.125 269.125	SYRACUSE TOWER 120.3 239.0	GND CON 121.7 348.6	CLNC DEL 125.05 257.775
-----------------	-------------------------------------	-------------------------------	------------------------	----------------------------



CATEGORY	A	B	C	D
S-ILS 10**	621/24		200 (200-½)	
S-LOC 10	980/24	559 (600-½)	980/60	559 (600-1¼)
 CIRCLING	980-1	559 (600-1)	1020-1½ 599 (600-1½)	1180-2½ 759 (800-2½)
TANQUE FIX MINIMUMS (DME REQUIRED)				
S-LOC 10	780/24	359 (400-½)	780/30	359 (400-¾)
 CIRCLING	900-1 479 (500-1)	920-1 499 (500-1)	1020-1½ 599 (600-1½)	1180-2½ 759 (800-2½)



NE-2, 07 AUG 2025 to 04 SEP 2025