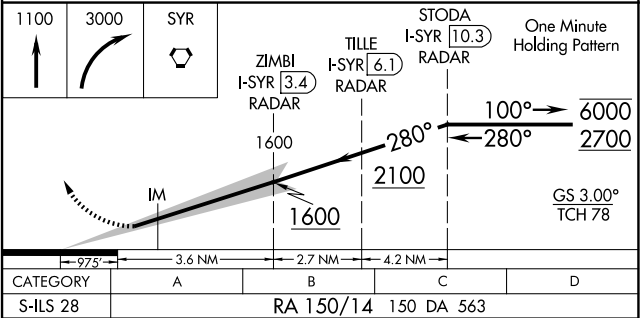
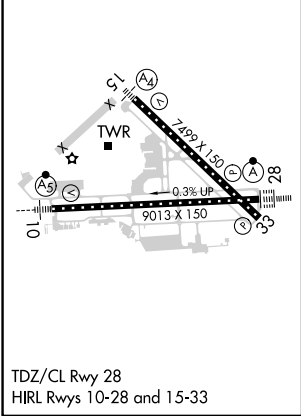
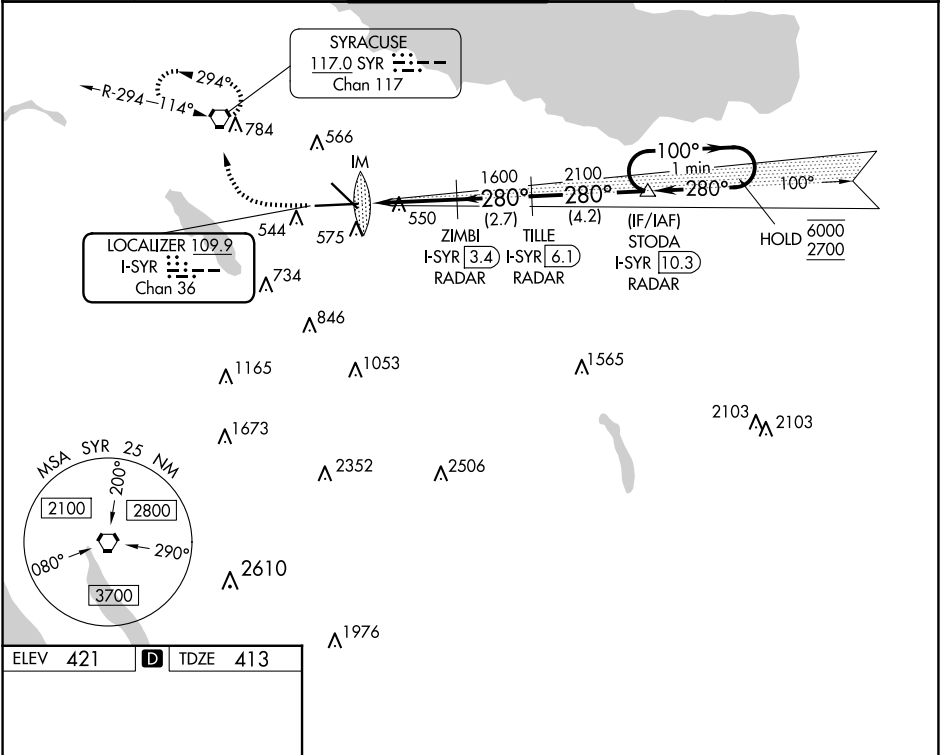


LOC/DME I-SYR <b>109.9</b> Chan <b>36</b>	APP CRS <b>280°</b>	Rwy Idg TDZE <b>413</b> Apt Elev <b>421</b>
---	------------------------	---

ILS RWY 28 (SA CAT I)  
SYRACUSE HANCOCK INTL (SYR)

DME or RADAR required.		ALSIF-2	MISSED APPROACH: Climb to 1100 then climbing right turn to 3000 direct SYR VORTAC and hold, continue climb-in-hold to 3000.	
Requires specific OPSPEC, MSPEC, or LOA approval and use of HUD to DH.				
ATIS <b>124.225</b>	SYRACUSE APP CON <b>126.125 269.125</b>	SYRACUSE TOWER <b>120.3 239.0</b>	GND CON <b>121.7 348.6</b>	CLNC DEL <b>125.05 257.775</b>



SA CATEGORY I ILS - SPECIAL AIRCREW & AIRCRAFT CERTIFICATION REQUIRED