

LOC/DME I-SYR 109.9 Chan 36	APP CRS 280°	Rwy Idg 9013 TDZE 413 Apt Elev 421
---	------------------------	---

ILS RWY 28 (CAT II)
SYRACUSE HANCOCK INTL (SYR)

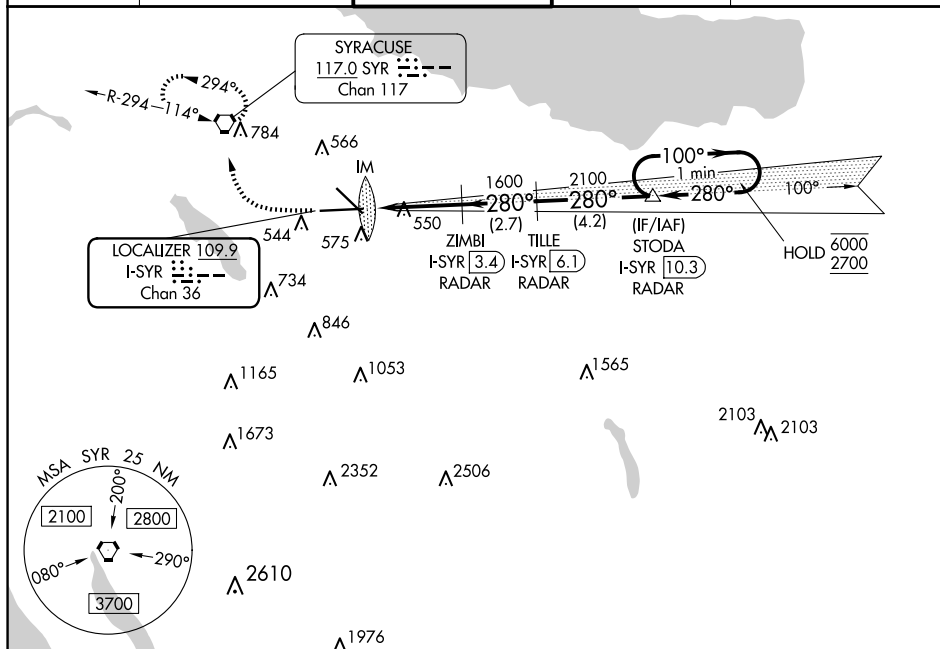
DME or RADAR required.

T RVR 1000 authorized with specific OPSEC, MSPEC, or LOA
A approval and use of autoland or HUD to touchdown.

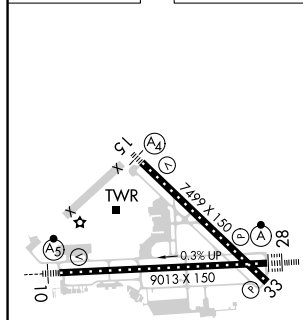
ALSF-2

MISSED APPROACH: Climb to 1100 then climbing right turn to 3000 direct SYR VORTAC and hold, continue climb-in-hold to 3000.

ATIS 124.225	SYRACUSE APP CON 126.125 269.125	SYRACUSE TOWER 120.3 239.0	GND CON 121.7 348.6	CLNC DEL 125.05 257.775
-----------------	-------------------------------------	-------------------------------	------------------------	----------------------------



ELEV 421	D	TDZE 413
----------	----------	----------



CATEGORY II ILS - SPECIAL AIRCREW
& AIRCRAFT CERTIFICATION REQUIRED