

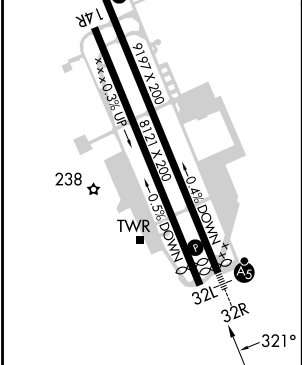
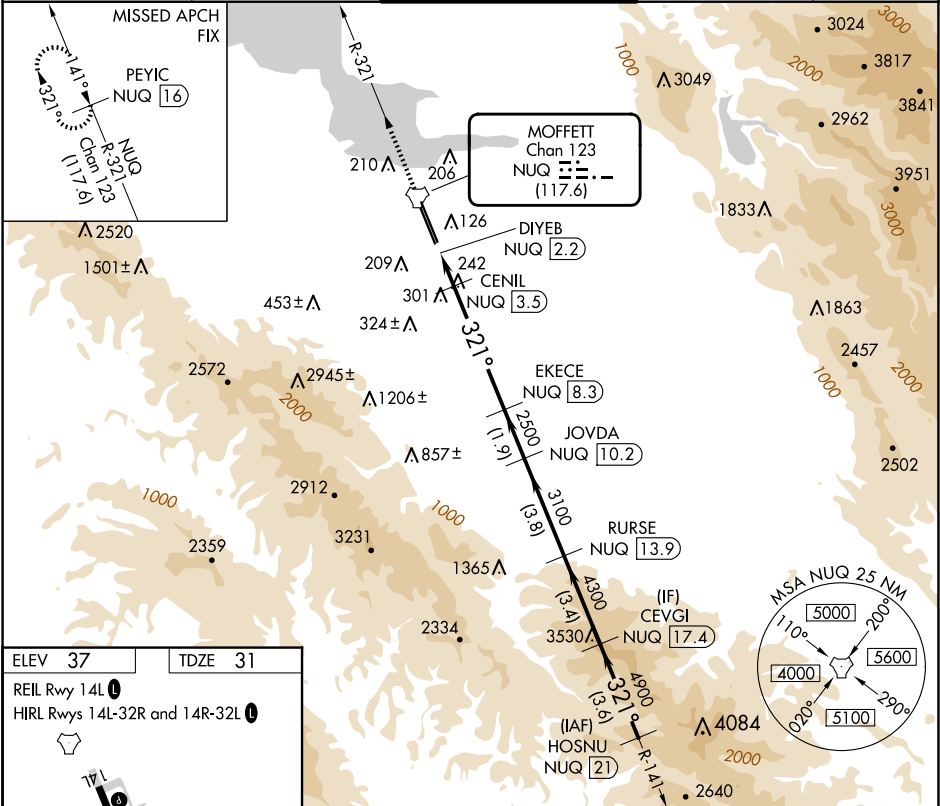
TACAN NUQ	APP CRS	Rwy Idg	9006
Chan 123	321°	TDZE	31
(117.6)		Apt Elev	37

TACAN RWY 32R

MOFFETT FEDERAL AIRFIELD (NUQ)

RADAR required for procedure entry.		MALSR	MISSED APPROACH: Climb to 3200 on NUQ TACAN R-321 to PEYIC/16 DME and hold.
For inop ALS, increase Cat E visibility to 1 ½ SM.		AS	

ATIS	NORCAL APP CON	MOFFETT TOWER ★	GND CON	CLNC DEL
124.175 283.0	120.1 290.25	119.55 (CTAF) 259.65	121.85 278.95	296.75



3200	PEYIC NUQ [16]	VGSI and descent angles not coincident (VGSI Angle 3.00/TCH 55).			CEVGI NUQ [17.4]	HOSNU NUQ [21]
	DIYEB NUQ [2.2]	CENIL NUQ [3.5]	EKECE NUQ [8.3]	JOVDA NUQ [10.2]	RURSE NUQ [13.9]	321° 5500
720		3.48° TCH 55	2500	3100	4300	4900
0.5		1.3 NM	4.8 NM	1.9 NM	3.8 NM	3.4 NM
CATEGORY	A	B	C	D	E	
S-32R	560-½	529 (600-½)	560-1	529 (600-1)		
CIRCLING	560-1 523 (600-1)	600-1 563 (600-1)	620-1½ 583 (600-1½)	780-2½ 743 (800-2½)	940-3 903 (1000-3)	