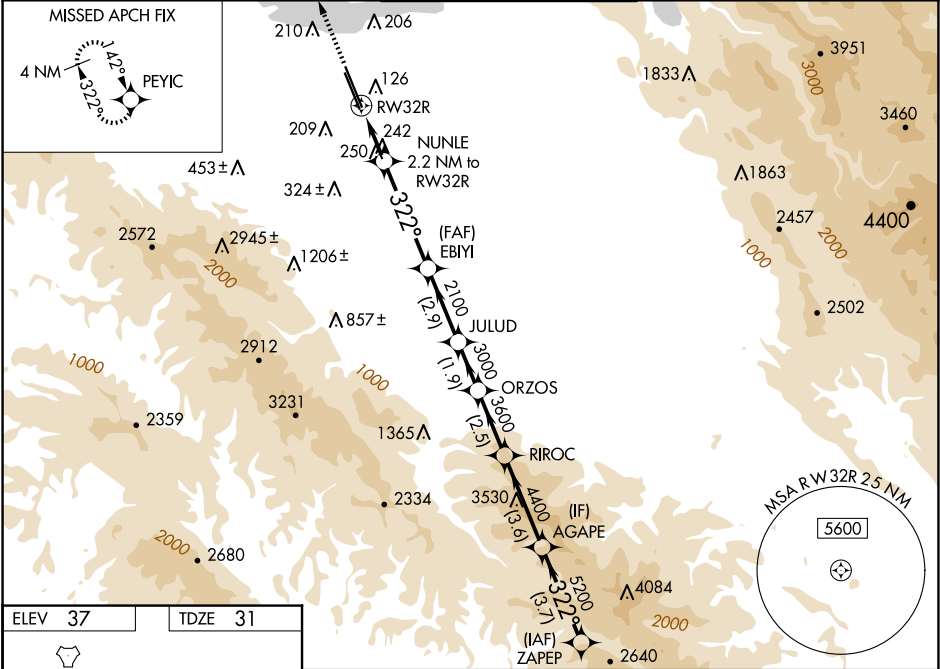


WAAS CH 53343 W32B	APP CRS 322°	Rwy Idg TDZE Apt Elev	9006 31 37
--	------------------------	-----------------------------	---------------------------------------

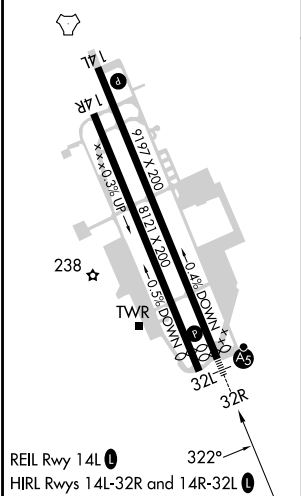
RNAV (GPS) RWY 32R
MOFFETT FEDERAL AIRFIELD (NTUQ)

RNP APCH - GPS.		MALSR	MISSED APPROACH: Climb to 3200 direct PEYIC and hold.
▼ For uncompensated Baro-VNAV systems, LNAV/VNAV NA below -15°C or above 54°C. Rwy 32R helicopter visibility reduction below ¾ SM NA. For inop ALS increase LPV all Cats visibility to 1¼ SM, LNAV/VNAV all Cats visibility to 1¾ SM and LNAV Cats A/B to 1 SM and Cats C/D visibility to 1¾ SM.		AS	

ATIS 124.175 283.0	NORCAL APP CON 120.1 290.25	MOFFETT TOWER★ 119.55 0 (CTAF) 259.65	GND CON 121.85 278.95	CLNC DEL 296.75
------------------------------	---------------------------------------	---	---------------------------------	---------------------------



ELEV 37	TDZE 31
---------	---------



3200	PEYIC								
CATEGORY		A		B		C		D	
LPV	DA	452-¾ 421 (500-¾)							
LNAV/ VNAV	DA	493-1 462 (500-1)							
LNAV MDA		500-¾ 469 (500-¾)				500-1 469 (500-1)			
CIRCLING		540-1 503 (600-1)	600-1 563 (600-1)	620-1½ 583 (600-1½)	780-2½ 743 (800-2½)				