

LOC/DME I-NUQ 110.35 Chan 40 (Y)	APP CRS 322°	Rwy Idg 9006 TDZE 31 Apt Elev 37
--	------------------------	---

ILS or LOC RWY 32R
MOFFETT FEDERAL AIRFIELD (NUQ)

DME required. RADAR required for procedure entry.

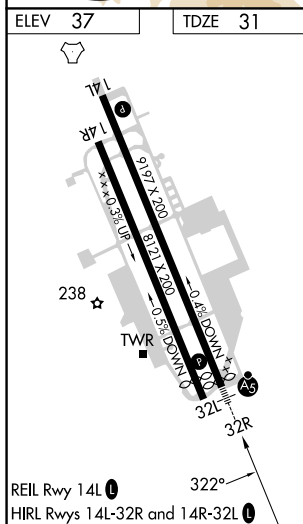
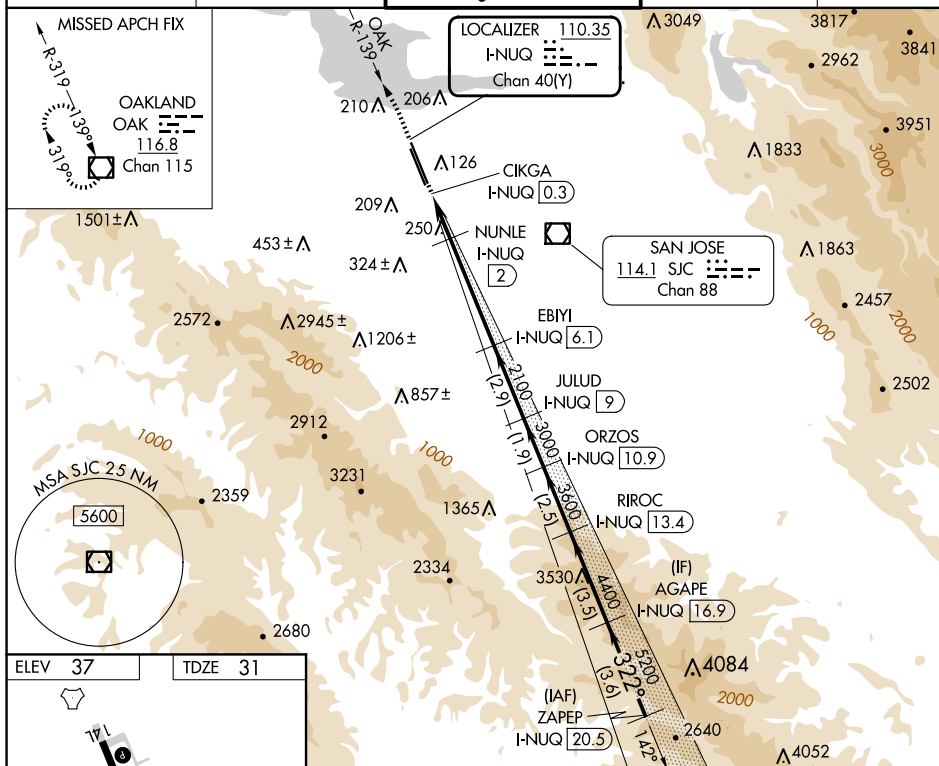
T For inop ALS, increase S-ILS 32R visibility all Cats to 1 3/8 SM.
A and S-LOC 32R Cat A/B to 1 SM and C/D/E to 1 3/8 SM.

MALSRL



MISSED APPROACH: Climb to 700 then climbing left turn to 4000 on heading 310° and on OAK VOR/DME R-139 to OAK VOR/DME and hold.

ATIS 124.175 283.0	NORCAL APP CON 120.1 290.25	MOFFETT TOWER ★ 119.550 (CTAF) 259.65	GND CON 121.85 278.95	CLNC DEL 296.75
-----------------------	--------------------------------	--	--------------------------	--------------------



700 ↑ hdg 310°	OAK R-139	OAK □	EBIYI I-NUQ (6.1)	JULUD I-NUQ (9)	ORZOS I-NUQ (10.9)	RIROC I-NUQ (13.4)	AGAPE I-NUQ (16.9)	ZAPEP I-NUQ (20.5)
			322° 5500 5200 3000 3600 4400 780 2100 0.5 0.8 0.9 4.1 NM → 2.9 NM → 1.9 NM 2.5 NM 3.5 NM → 3.6 NM → GS 3.00° TCH 57'					
CATEGORY	A		B		C		D	
S-ILS 32R	483-7/8 452 (500-7/8)							
S-LOC 32R	500-3/4 469 (500-3/4)				500-1 469 (500-1)			
CIRCLING	540-1	600-1	620-1 1/2	780-2 1/2	940-3			
	503 (600-1)	563 (600-1)	583 (600-1 1/2)	743 (800-2 1/2)	903 (1000-3)			