

TACAN Y RWY 4L

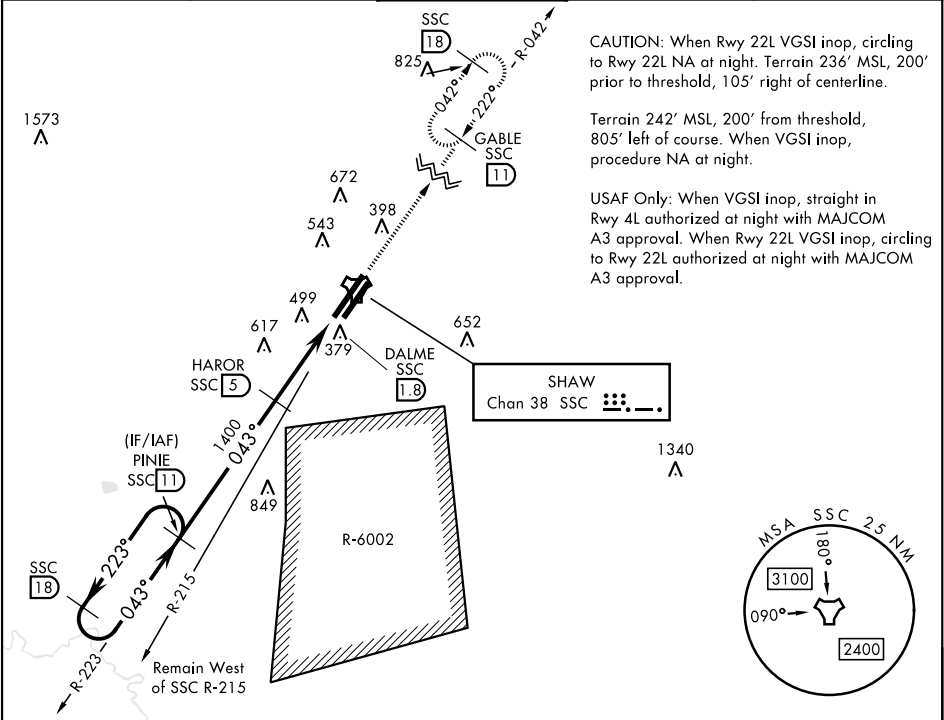
TACAN	SSC	APCH CRS	Rwy Idg	4L	4R
Chan	38	043°	TDZE	10,014	8014
			Arpt Elev	240	236
				241	241

[USAF]

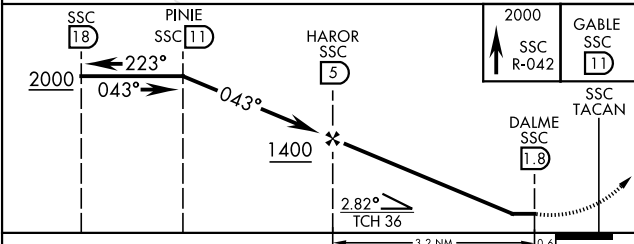
SHAW AFB (KSSC)

RADAR required when R-6002 active.			ALSF-1	MISSED APPROACH: Climbing to 2000, intercept SSC TACAN R-042 to GABLE and hold.
* When ALS inop, increase CAT AB RVR to 55 and vis to 1 mile, CAT CDE vis to 1½ miles.			A1	

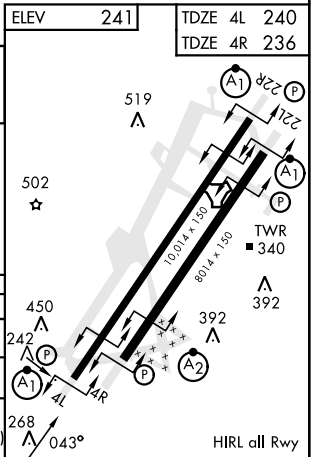
ATIS ★	SHAW APP CON	SHAW TOWER ★	GND CON	CLNC DEL
132.125 270.1	125.4 318.1	126.65 254.25	121.8 289.4	121.8 289.4



EMERG SAFE ALT 100 NM 3800



CATEGORY	A	B	C	D	E
S-4L *	800/50	560 (600-1)	800/60	560 (600-1½)	
SIDESTEP * 4R	800/50	564 (600-1)	800-1½	564 (600-1½)	
CIRCLING	820-1 579 (600-1)	880-1 639 (700-1)	1000-2¼ 759 (800-2¼)	1000-2½ 759 (800-2½)	1000-2¾ 759 (800-2¾)



TACAN Y RWY 4L

SE-2, 07 AUG 2025 to 04 SEP 2025

SE-2, 07 AUG 2025 to 04 SEP 2025