

TACAN SSC		APCH CRS	Rwy Idg	22R	22L
Chan	38	222°	10,014	8014	
			TDZE	240	235
			Arpt Elev	241	241

[USAF]

SHAW AFB (KSSC)

RADAR required when R-6002 active.

T * When ALS inop, increase CAT AB RVR to 55, vis to 1 mile; CAT CDE vis to 1½ miles.

ALSF-1

MISSED APPROACH: Climbing to 2000, intercept SSC TACAN R-223 to PINIE and hold.

ATIS ★ 132.125 270.1	SHAW APP CON 125.4 318.1	SHAW TOWER ★ 126.65 254.25	GND CON 121.8 289.4	CLNC DEL 121.8 289.4
-------------------------	-----------------------------	-------------------------------	------------------------	-------------------------

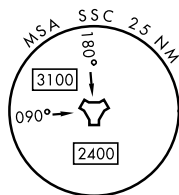
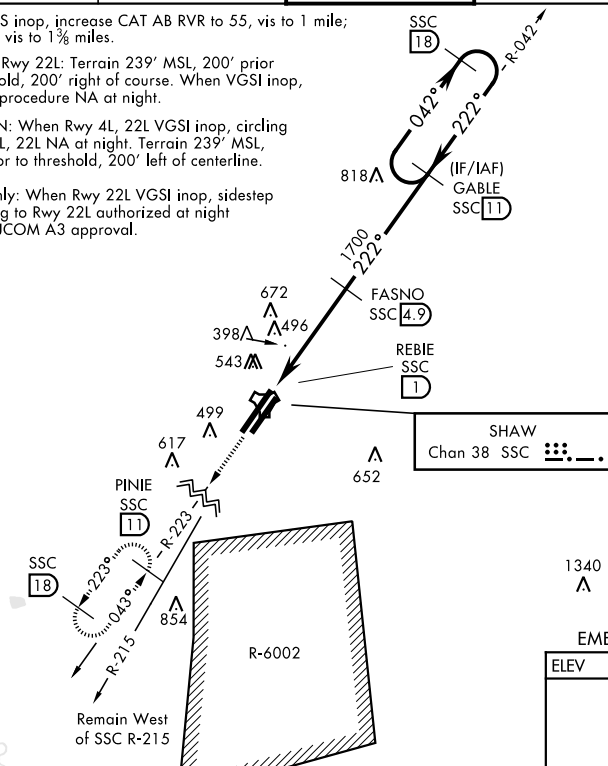
** When ALS inop, increase CAT AB RVR to 55, vis to 1 mile;
CAT CDE vis to 1 $\frac{3}{8}$ miles.

Sidestep Rwy 22L: Terrain 239' MSL, 200' prior to threshold, 200' right of course. When VGSI inop, sidestep procedure NA at night.

CAUTION: When Rwy 4L, 22L VGSI inop, circling to Rwy 4L, 22L NA at night. Terrain 239' MSL, 200' prior to threshold, 200' left of centerline.

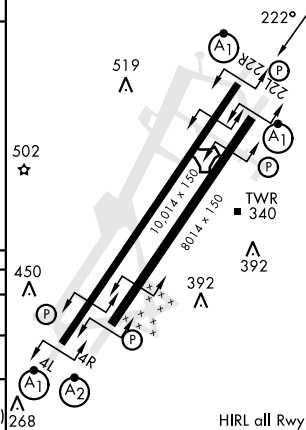
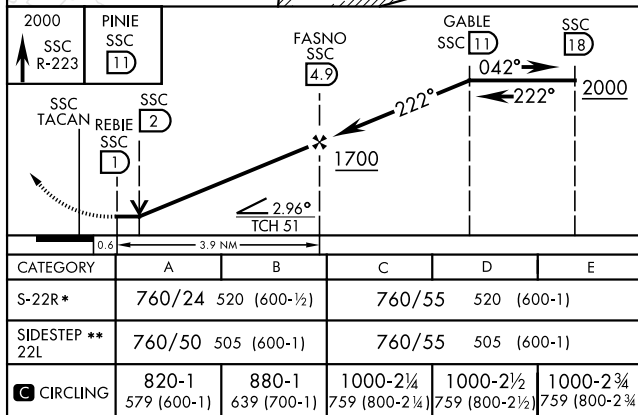
USAF Only: When Rwy 22L VGSI inop, sidestep or circling to Rwy 22L authorized at night with MAJCOM A3 approval.

1573



FMERG SAFE ALT 100 NM 3800

ELEV	241	TDZE 22R	240
		TDZE 22L	235



HIRL all Rwy

SUMTER, SOUTH CAROLINA

33° 58' N-80° 28' W

SHAW AFB (KSSC)

Amdt 1 07NOV19

TACAN Y RWY 22R

SE-2, 07 AUG 2025 to 04 SEP 2025

SE-2, 07 AUG 2025 to 04 SEP 2025