

ILS or LOC Y RWY 4L

LOC I-SSC <b>110.1</b>	APCH CRS <b>043°</b>	Rwy Idg TDZE Arpt Elev	4L <b>10,014</b> <b>240</b> <b>241</b>	4R <b>8014</b> <b>236</b> <b>241</b>
---------------------------	-------------------------	------------------------------	---	---

[USAF]

SHAW AFB (KSSC)

RADAR or DME required.

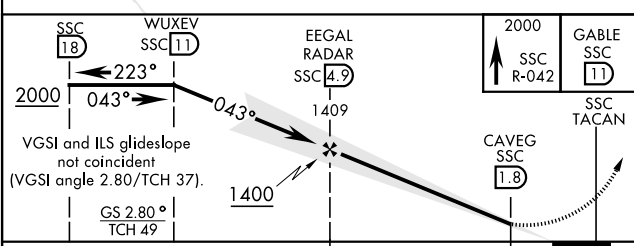
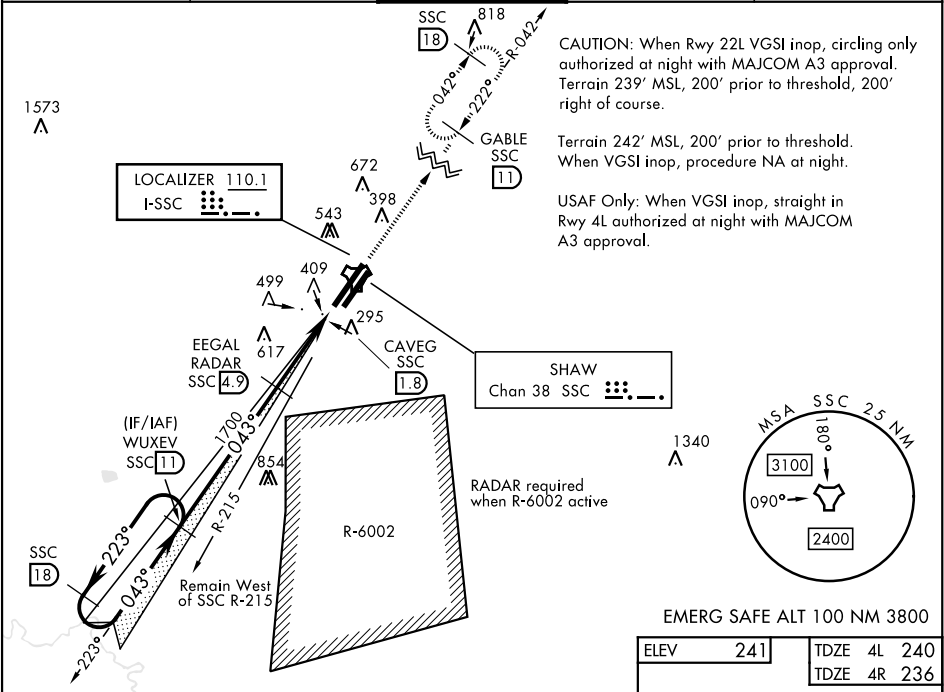
▲ \* When ALS inop, increase CAT AB RVR to 55 and vis to 1 mile, CAT CDE vis to 1½ miles.

ALSF-1

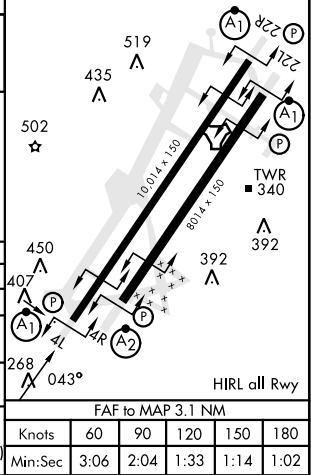
(A1)

MISSED APPROACH: Climbing to 2000, intercept SSC TACAN R-042 to GABLE and hold.

ATIS ★ <b>132.125 270.1</b>	SHAW APP CON <b>125.4 318.1</b>	SHAW TOWER ★ <b>126.65 254.25</b>	GND CON <b>121.8 289.4</b>	CLNC DEL <b>121.8 289.4</b>
--------------------------------	------------------------------------	--------------------------------------	-------------------------------	--------------------------------



CATEGORY	A	B	C	D	E
S-ILS 4L	490/50		250	(300-1)	
S-LOC 4L *	780/50	540 (600-1)	780/55	540	(600-1)
SIDESTEP 4R *	780/50	544 (600-¾)	780-1¾	544	(600-1¾)
CIRCLING	820-1	880-1	1000-2¼	1000-2½	1000-2¾
	579 (600-1)	639 (700-1)	759 (800-2¼)	759 (800-2½)	759 (800-2¾)



ILS or LOC Y RWY 4L

SE-2, 07 AUG 2025 to 04 SEP 2025

SE-2, 07 AUG 2025 to 04 SEP 2025