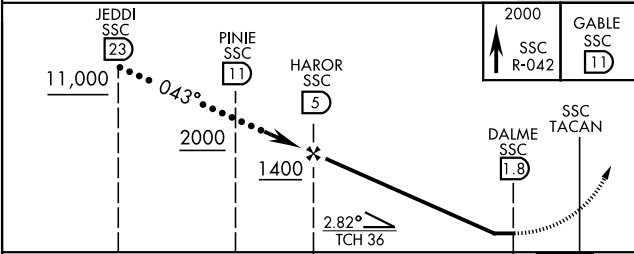
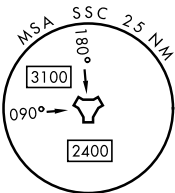
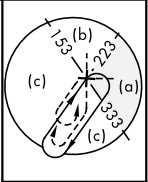
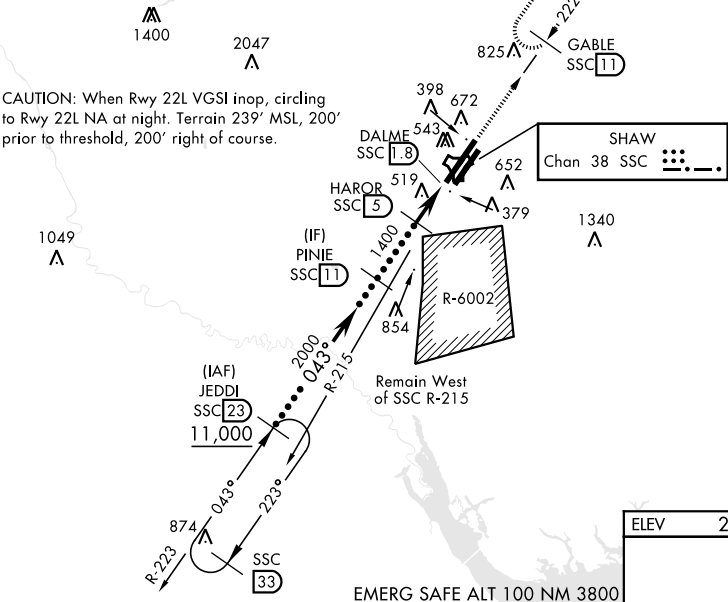


TACAN SSC Chan 38	APCH CRS 043°	Rwy Idg TDZE Arpt Elev	4L 10,014 240 241	4R 8014 236 241	[USAF]	SHAW AFB (KSSC)
RADAR required when R-6002 active.					ALSF-1 	MISSED APPROACH: Climbing to 2000, intercept SSC TACAN R-042 to GABLE and hold.
* When ALS inop, increase vis to 1½ miles.						
ATIS ★ 132.125 270.1	SHAW APP CON 125.4 318.1	SHAW TOWER ★ 126.65 254.25		GND CON 121.8 289.4	CLNC DEL 121.8 289.4	

When VGSI inop, procedure NA at night.
Terrain 242' MSL, 200' prior to threshold,
816' left of course.

USAF Only: When VGSI inop, straight in
Rwy 4L authorized at night with MAJCOM
A3 approval.



CATEGORY	C	D	E
S-4L *	800/60	560 (600-1½)	
SIDESTEP 4R *	800-1½	564 (600-1½)	
CIRCLING	1000-2¼ 759 (800-2¼)	1000-2½ 759 (800-2½)	1000-2¾ 759 (800-2¾)

