

HI-TACAN Z RWY 22R

[USAF]

SHAW AFB (KSSC)

RADAR required when R-6002 active.

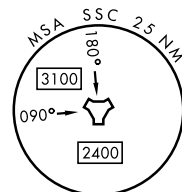
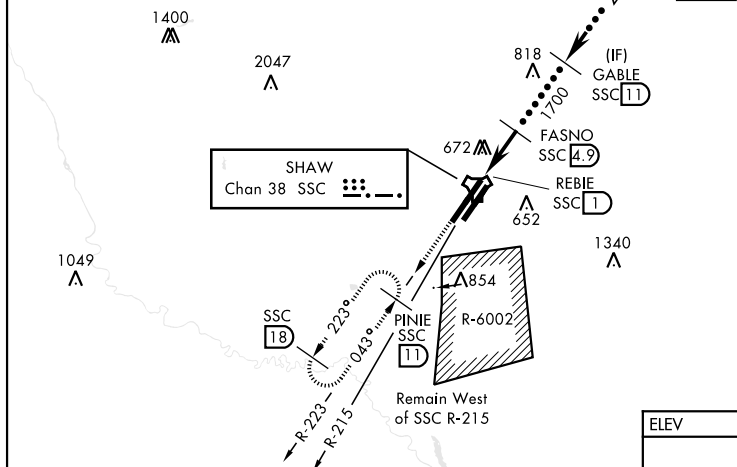
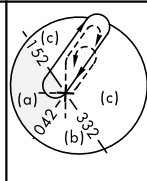
ALSF-1

MISSED APPROACH: Climbing to 2000, intercept SSC TACAN R-223 to PINIE and hold.

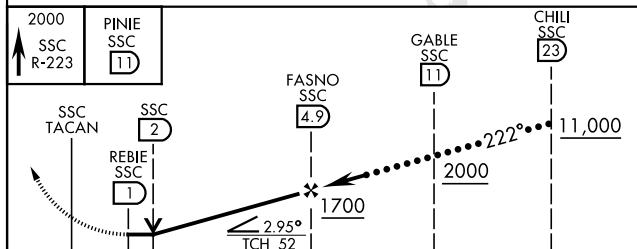
T * When ALS inop, increase vis to 1½ miles.
 ** When ALS inop, increase vis to 1⅜ miles.

USAF Only: When Rwy 4L VGSI inop, circling to Rwy 4L at night requires approval from MAJCOM director of Ops or equivalent. Terrain 242' MSL, 200' prior to threshold.

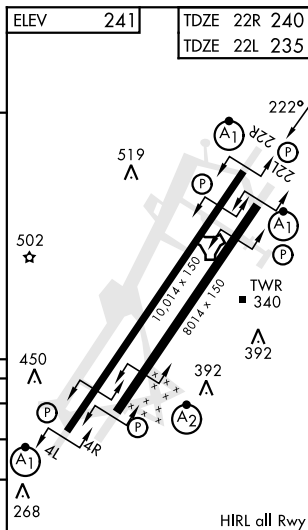
USAF Only: When VGSI inop, sidestep to Rwy 22L, circling to Rwy 22L at night requires approval from MAJCOM Director of Ops or equivalent. Terrain 239' MSL, 200' prior to threshold, 200' right of course.



EMERG SAFE ALT 100 NM 3800



	0.6 NM	3.9 NM		
CATEGORY	C	D	E	
S-22R *	760/55	520 (600-1)		
SIDESTEP 22L **	760/55	505 (600-1)		
C CIRCLING	1000-2½ 759 (800-2¼)	1000-2½ 759 (800-2½)	1000-2¾ 759 (800-2¾)	



SUMTER, SOUTH CAROLINA

33°58'N-80°28'W

SHAW AFB (KSSC)

Amdt 1 07NOV19

HI-TACAN Z RWY 22R