

SUMTER, SOUTH CAROLINA

HI-ILS or LOC Z RWY 22R

LOC I-JWU	APCH CRS	Rwy Idg	22R 22L
<u>108.7</u>	<u>223°</u>	10,014	8014
		TDZE	240 235
		Arpt Elev	241 241

[USAF]

SHAW AFB (KSSC)

RADAR or DME required. RADAR required when R-6002 active.

T * When ALS inop, increase RVR to 40 and vis to $\frac{3}{4}$ mile.

** When ALS inop, increase vis to 1 ¼ miles.

ALSF-1

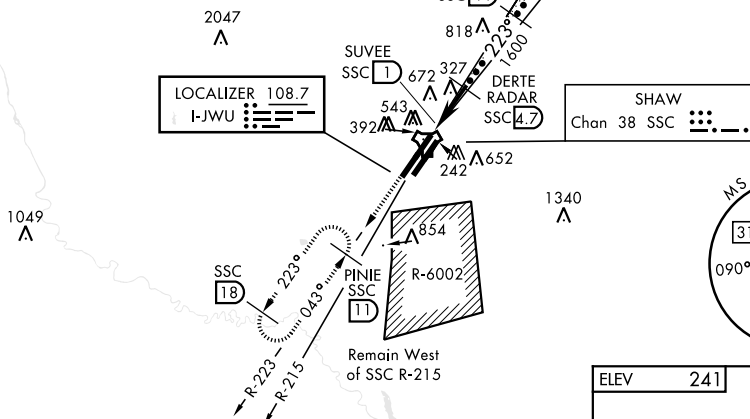
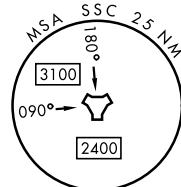
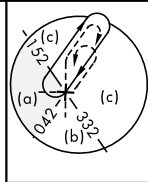
MISSED APPROACH: Climbing to 2000, intercept SSC TACAN R-223 to PINIE and hold.

ATIS ★	SHAW APP CON	SHAW TOWER ★	GND CON	CLNC DEL
132.125 270.1	125.4 318.1	126.65 254.25	121.8 289.4	121.8 289.4

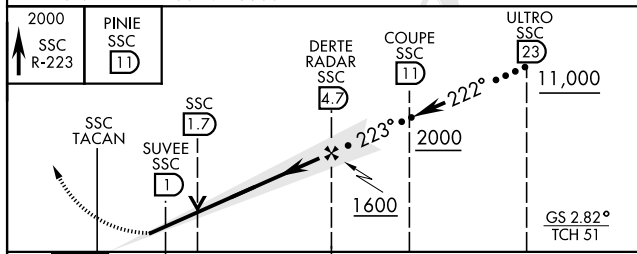
Sidestep Rwy 22L: Terrain 239' MSL, 200' prior to threshold, 200' right of course. When VGSi inop, sidestep procedure NA at night.

CAUTION: When Rwy 4L VGSI inop, circling to Rwy 04L, 22L NA at night. Terrain 239' MSL, 200' prior to threshold, 200' left of centerline.

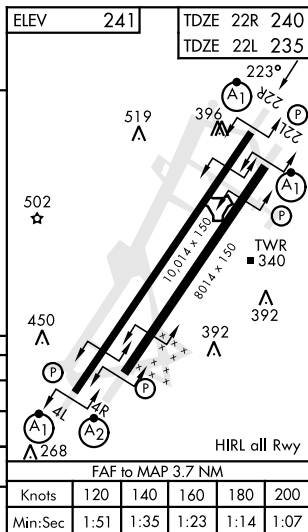
USAF ONLY: When VGSI inop, circling and sidestep to Rwy 22L authorized at night with approval from MAJCOM Director of Ops or equivalent.



EMERG SAFE ALT 100 NM 3800



CATEGORY	C	D	E
S-ILS 22R *	440/24	200 (200-½)	
S-LOC 22R**	660/40	420 (500-¾)	
SIDESTEP ** 22L	660-1¼	425 (500-1¼)	
CIRCLING	1000-2¼ 759 (800-2¼)	1000-2½ 759 (800-2½)	1000-2¾ 759 (800-2¾)



SUMTER, SOUTH CAROLINA

33°58'N-80°28'W

SHAW AFB (KSSC)

Amdt 1 10OCT19

HI-ILS or LOC Z RWY 22R

SE-2, 07 AUG 2025 to 04 SEP 2025

SE-2, 07 AUG 2025 to 04 SEP 2025