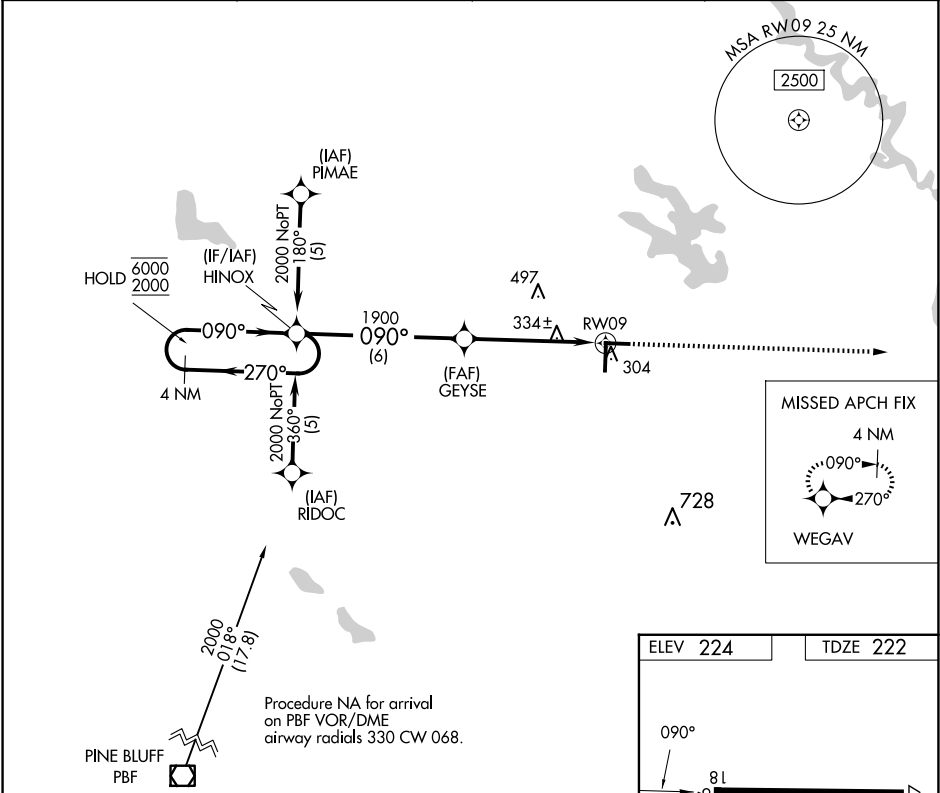


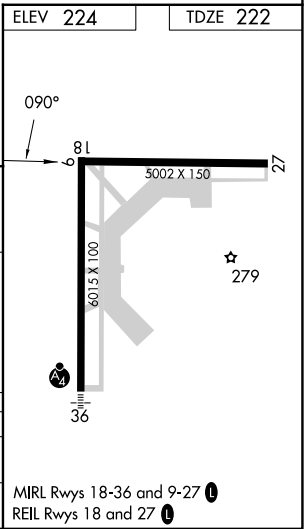
APP CRS	Rwy Idg	5002
090°	TDZE	222
	Apt Elev	224

RNAV (GPS) RWY 9
STUTT GART MUNI CARL HUMPHREY FLD (SGT)

RNP APCH - GPS.		MISSED APPROACH: Climb to 2000 direct WEGAV and hold.	
AWOS-3PT 119.025	LITTLE ROCK APP CON 135.4 353.6	CLNC DEL 123.7	UNICOM 122.8 (CTAF) 0



4 NM Holding Pattern		HINOX	GEYSE	2000	WEGAV
6000 2000		270° 090°	090°	1900	1 NM to RW09
		6 NM	4 NM	1.0	
CATEGORY	A	B	C	D	
LNAV MDA	600-1 378 (400-1)			600-1¼ 378 (400-1¼)	
CIRCLING	660-1 436 (500-1)	680-1 456 (500-1)	760-1½ 536 (600-1½)	860-2 636 (700-2)	



SC-1, 07 AUG 2025 to 04 SEP 2025

SC-1, 07 AUG 2025 to 04 SEP 2025