

WAAS CH 97311 W36A	APP CRS 360°	Rwy Idg 6015 TDZE 224 Apt Elev 224
--	------------------------	---

RNAV (GPS) RWY 36

STUTTGART MUNI CARL HUMPHREY FLD (SGT)

RNP APCH.

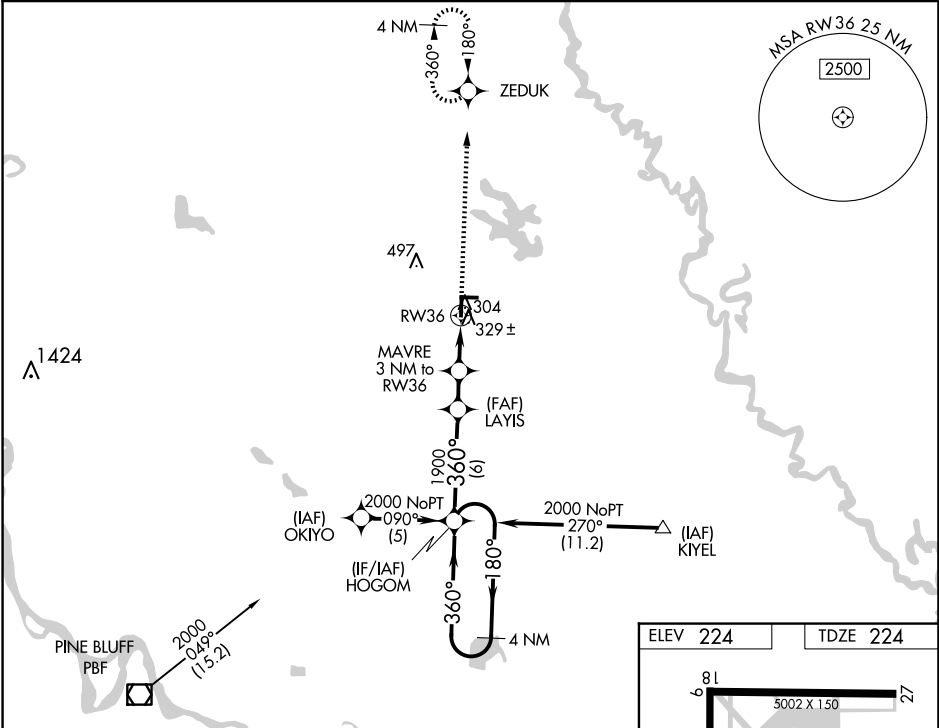
When local altimeter setting not received, use Bill and Hillary Clinton Nil/Adams Fld altimeter setting; increase LPV DA to 556 and all visibilities $\frac{1}{2}$ SM; increase all MDAs 100 feet and visibility Cats C and D $\frac{1}{4}$ SM. For inop MALSF when using Bill and Hillary Clinton Nil/Adams Fld altimeter setting, increase LPV all Cats visibility to $1\frac{1}{2}$ mile. VDP NA when using Bill and Hillary Clinton Nil/Adams Fld altimeter setting.

MALSF



MISSED APPROACH:
Climb to 2000 direct
ZEDUK and hold.

AWOS-3PT 119.025	LITTLE ROCK APP CON 135.4 353.6	CLNC DEL 123.7	UNICOM 122.8 (CTAF) 0
----------------------------	---	--------------------------	---------------------------------



<div>HOGOM</div> <div>4 NM Holding Pattern</div> <div>2000 ← 180°</div> <div>360° →</div> <div>GP 3.00° TCH 50</div> <div>1900</div> <div>1220</div> <div>MAVRE 3 NM to RW36</div> <div>*1.1 NM to RW36</div> <div>RW36</div> <div>6 NM</div> <div>2 NM</div> <div>1.9 NM</div> <div>1.1 NM</div> <div>2000</div> <div>ZEDUK</div> <div>*RNAV only.</div>				
CATEGORY	A	B	C	D
LPV DA	474- $\frac{3}{4}$ 250 (300- $\frac{3}{4}$)			
LNNAV MDA	620- $\frac{3}{4}$ 396 (400- $\frac{3}{4}$)			
CIRCLING	660-1	680-1	760-1 $\frac{1}{2}$	860-2
	436 (500-1)	456 (500-1)	536 (600-1 $\frac{1}{2}$)	636 (700-2)

