

LOC/DME I-SCK	APP CRS	Rwy Idg	8650
109.1	294°	TDZE	32
Chan 28		Apt Elev	33

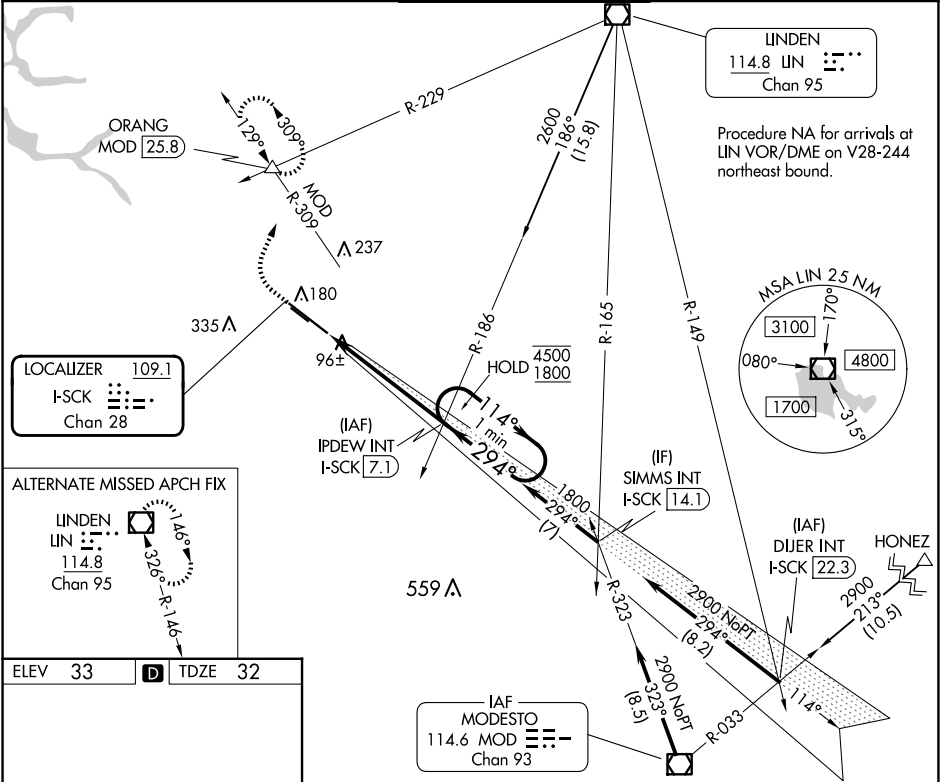
ILS RWY 29R (SA CAT II)
STOCKTON METRO (SCK)

Reduced lighting: requires specific OPSPEC, MSPEC, or LOA approval and use of autoland or HUD to touchdown. Procedure NA when tower closed.

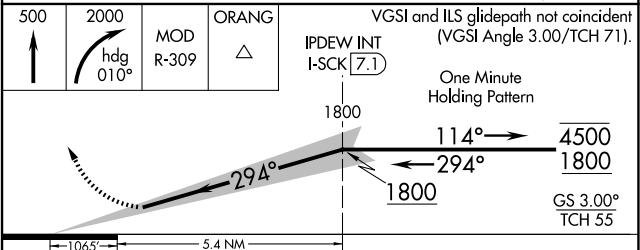
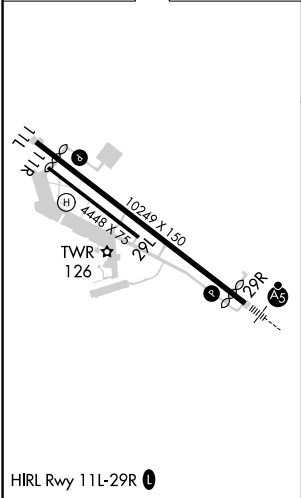


MISSED APPROACH: Climb to 500 then climbing right turn to 2000 on heading 010° and MOD VOR/DME R-309 to ORANG INT/MOD 25.8 DME and hold.

ATIS	NORCAL APP CON	STOCKTON TOWER ★	GND CON	UNICOM
118.25	(SE-NW) 123.85 278.3 (N-SE) 125.1 363.2	120.3 (CTAF) 0 239.0	121.9	122.95



ELEV 33	D	TDZE 32
---------	---	---------



CATEGORY	A	B	C	D
S-ILS 29R	RA 105/12 100 DA 132			

SA CATEGORY II ILS - SPECIAL AIRCREW
& AIRCRAFT CERTIFICATION REQUIRED