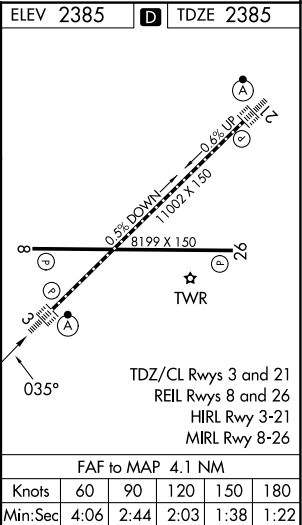
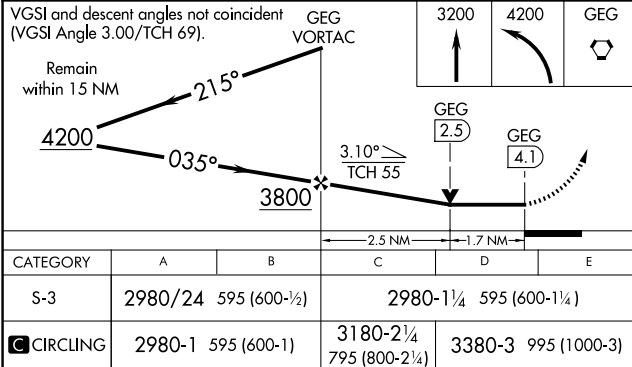
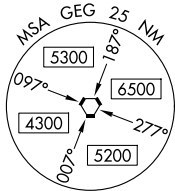
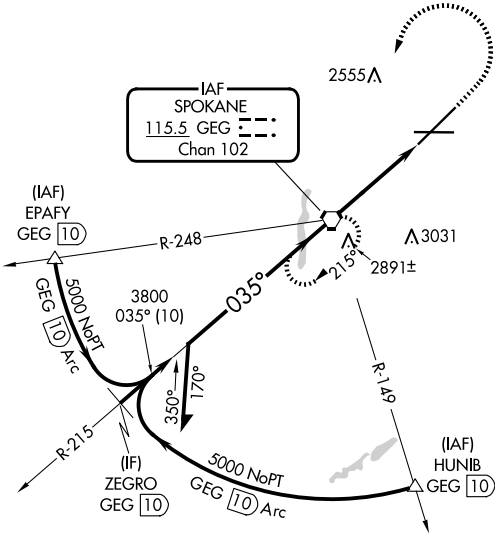


VORTAC GEG	APP CRS	Rwy Ldg	11002
115.5	035°	TDZE	2385
Chan 102		Apt Elev	2385

VOR RWY 3  
SPOKANE INTL (GEG)

<b>⚠</b> Circling NA for Cat E southeast of Rwy 3-21. For inop ALS, increase S-3 Cat E visibility to 1¼ SM.		ALSF-2 <b>A</b>	MISSED APPROACH: Climb to 3200 then climbing left turn to 4200 direct GEG VORTAC and hold, continue climb-in-hold to 4200.	
ATIS	SPOKANE APP CON	SPOKANE TOWER	GND CON	CLNC DEL
124.325 254.375	123.75 282.25 (205°-025°) 133.35 263.0 (026°-204°)	118.3 278.3	121.9 348.6	127.55



NW-1, 07 AUG 2025 to 04 SEP 2025

NW-1, 07 AUG 2025 to 04 SEP 2025