

SPOKANE, WASHINGTON

AL-403 (FAA)

25163

VORTAC GEG <b>115.5</b> Chan <b>102</b>	APP CRS <b>214°</b>	Rwy Ldg <b>11002</b> TDZE <b>2346</b> Apt Elev <b>2385</b>
---	------------------------	--

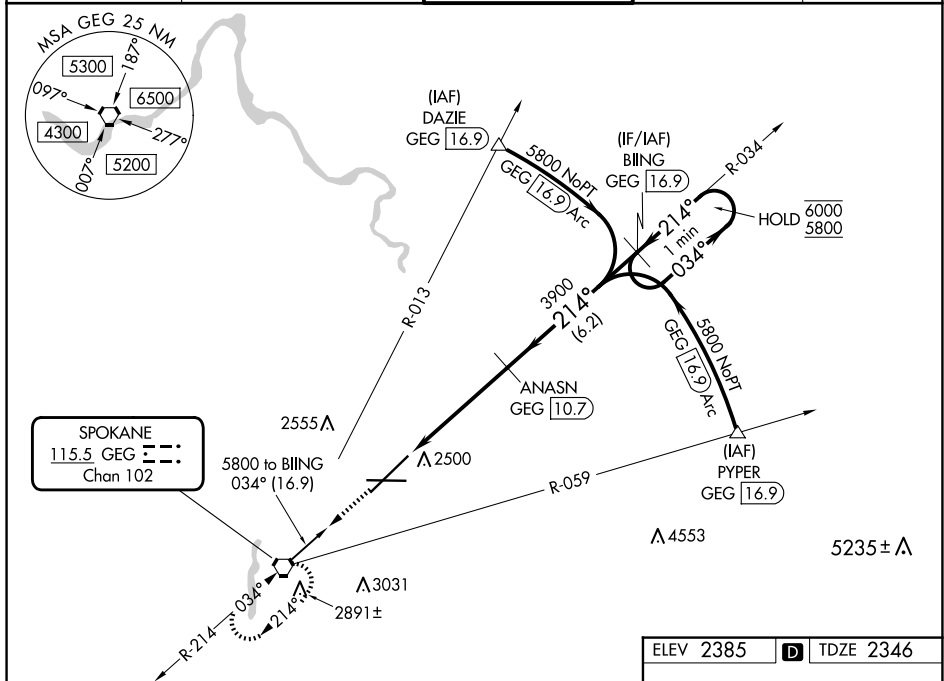
VOR RWY 21  
SPOKANE INTL (GEG)

DME required.

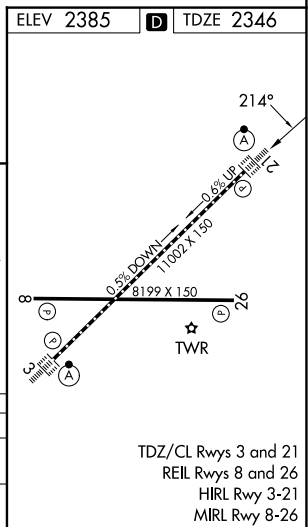
ALSF-2

**MISSED APPROACH:** Climb to 4200 direct GEG VORTAC and hold, continue climb-in-hold to 4200.

ATIS	SPOKANE APP CON	SPOKANE TOWER	GND CON	CLNC DEL
124.325 254.375	123.75 282.25 (205°-025°) 133.35 263.0 (026°-204°)	118.3 278.3	121.9 348.6	127.55



CATEGORY	A	B	C	D
S-21	2760/24	414 (400-½)	2760/40	414 (400-¾)
<b>C</b> CIRCLING	2960-1 575 (600-1)	2980-1 595 (600-1)	3180-2¼ 795 (800-2¼)	3380-3 995 (1000-3)



SPOKANE, WASHINGTON  
Orig-A 15JUN23

47°37'N-117°32'W

SPOKANE INTL (GEG)  
VOR RWY 21

NW-1, 07 AUG 2025 to 04 SEP 2025

NW-1, 07 AUG 2025 to 04 SEP 2025