

WAAS CH 48801 W08A	APP CRS 076°	Rwy Ldg 8199 TDZE 2376 Apt Elev 2385
--	------------------------	---

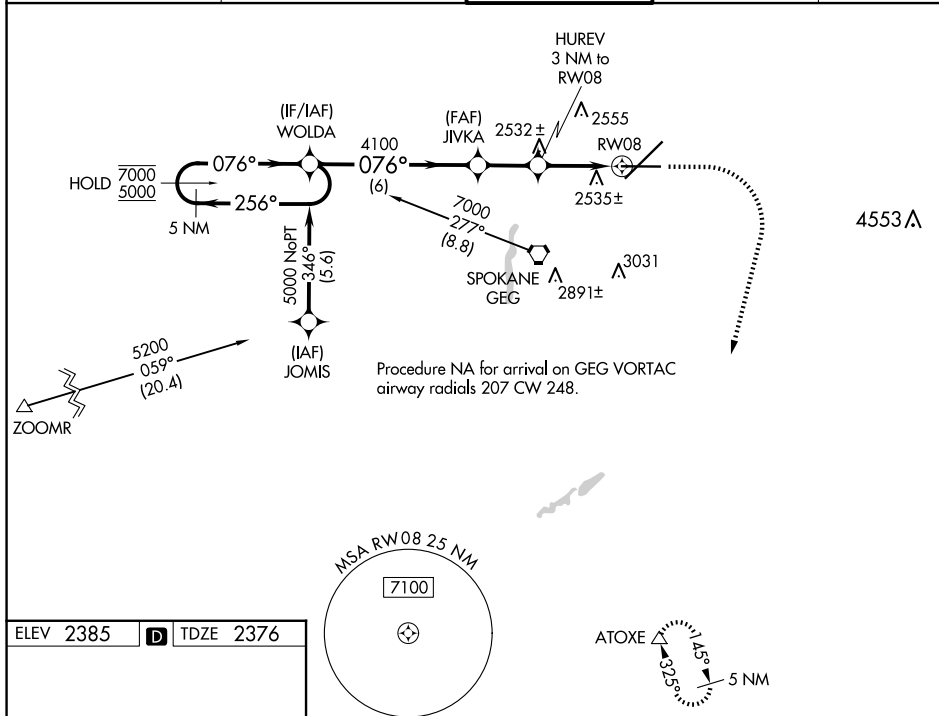
RNAV (GPS) Y RWY 8
SPOKANE INTL (GEG)

RNP APCH.

T For uncompensated Baro-VNAV systems, LNAV/VNAV NA below -18°C or above 52°C.

MISSED APPROACH: Climb to 2900, then climbing right turn to 6000 direct ATOXE and hold.

ATIS	SPOKANE APP CON		SPOKANE TOWER	GND CON		CLNC DEL
124.325 254.375	123.75 282.25 (205°-025°)	133.35 263.0 (026°-204°)		121.9 348.6	127.55	

[illegible]