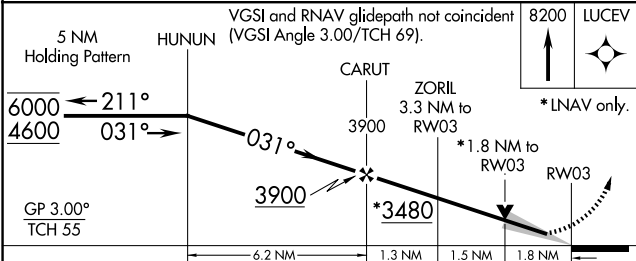
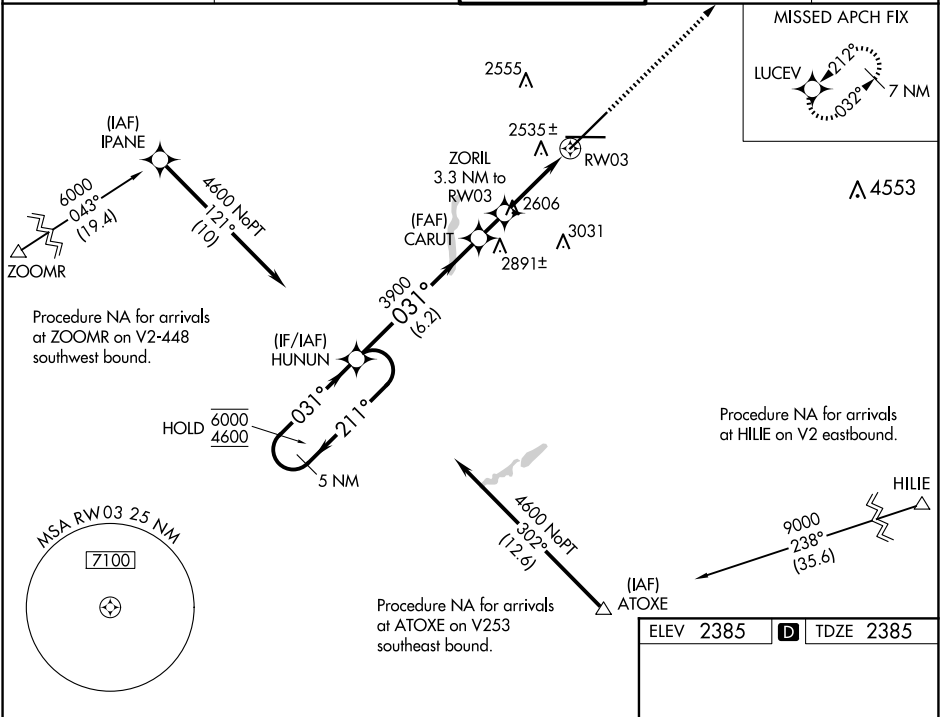


WAAS CH 81920 W03A	APP CRS 031°	Rwy Ldg TDZE 2385 Apt Elev 2385
--	------------------------	---

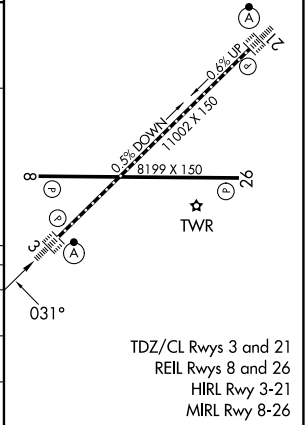
RNAV (GPS) Y RWY 3
SPOKANE INTL (GEG)

RNP APCH. ▼ For uncompensated Baro-VNAV systems, LNAV/VNAV NA below -18°C or above 53°C. For inop ALS increase LNAV/VNAV all Cats visibility to 1 ½ SM and increase LNAV Cats C and D visibility to 1 ¾ SM.	ALSf-2 A	MISSED APPROACH: Climb to 8200 direct LUCEV and hold, continue climb-in-hold to 8200.
--	-------------	---

ATIS 124.325 254.375	SPOKANE APP CON 123.75 282.25 (205°-025°) 133.35 263.0 (026°-204°)	SPOKANE TOWER 118.3 278.3	GND CON 121.9 348.6	CLNC DEL 127.55
--------------------------------	--	-------------------------------------	-------------------------------	---------------------------



CATEGORY	A	B	C	D
LPV DA	2585/18		200 (200-½)	
LNAV/VNAV DA	2962-1½		577 (600-1½)	
LNAV MDA	3020/24 635 (700-½)		3020/60 635 (700-1¼)	3020-1½ 635 (700-1½)



NW-1, 07 AUG 2025 to 04 SEP 2025

NW-1, 07 AUG 2025 to 04 SEP 2025