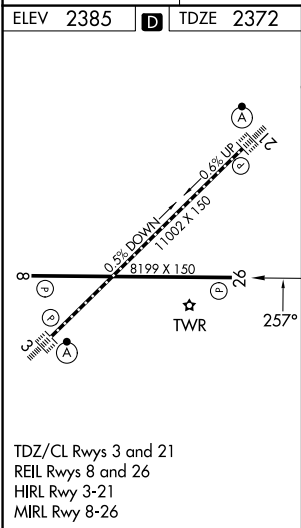
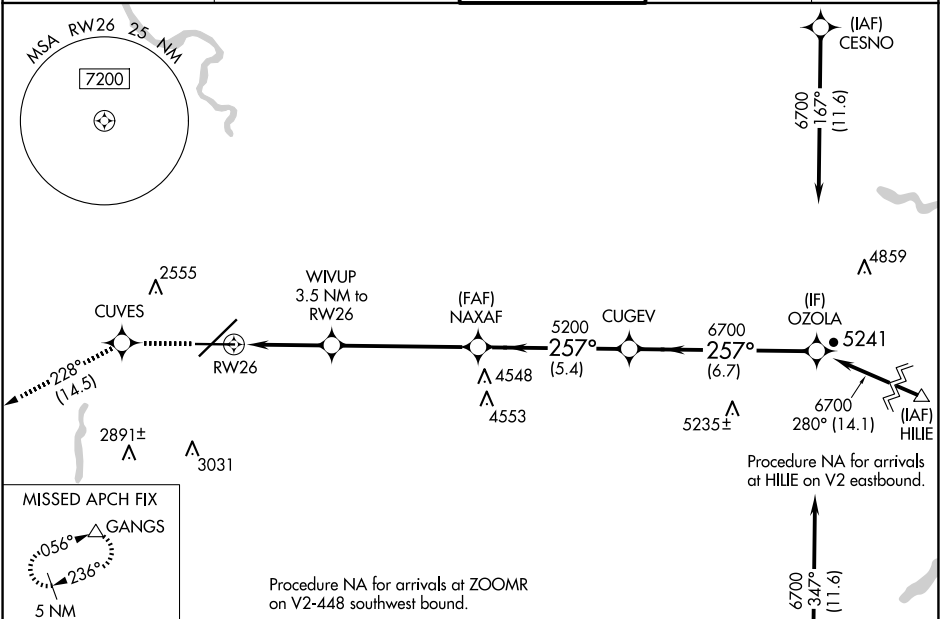
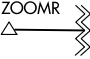







WAAS CH 93501 W26A	APP CRS 257°	Rwy Ldg TDZE Apt Elev 8199 2372 2385
--	------------------------	--

RNAV (GPS) Y RWY 26
SPOKANE INTL (GEG)

RNP APCH. ▼ Rwy 26 helicopter visibility reduction below ¾ SM NA. ▲ For uncompensated Baro-VNAV systems, LNAV/VNAV NA below -18°C or above 54°C.		MISSED APPROACH: Climb to 5000 direct CUVES and on track 228° to GANGS and hold.		
ATIS 124.325 254.375	SPOKANE APP CON 123.75 282.25 (205°-025°) 133.35 263.0 (026°-204°)	SPOKANE TOWER 118.3 278.3	GND CON 121.9 348.6	CLNC DEL 127.55



		8000 076° (52.9)		 (IAF) FISKI	
5000 	CUVES 	tr 228°	GANGS 		
*LNAV only.					
 RW26		WIVUP 3.5 NM to RW26			
1.6 NM to RW26		3520			
1.6 NM		1.9 NM	5.2 NM	5.4 NM	6.7 NM
NAXAF 5200		CUGEV 6700		OZOLA 6700	
257°		GP 3.00° TCH 48			
CATEGORY	A		B	C	D
LPV DA	2688-1		316 (400-1)		
LNAV/ VNAV	DA		2911-1½ 539 (600-1½)		
LNAV MDA	2920-1 548 (600-1)		2920-1½ 548 (600-1½)		
CIRCLING	2960-1 575 (600-1)		2980-1 595 (600-1)		3300-2¾ 915 (1000-2¾)
					3400-3 1015 (1100-3)