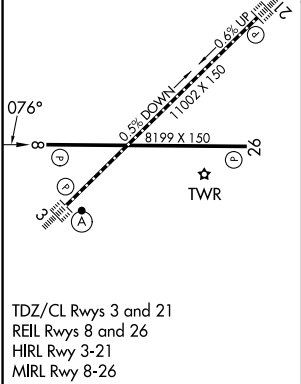
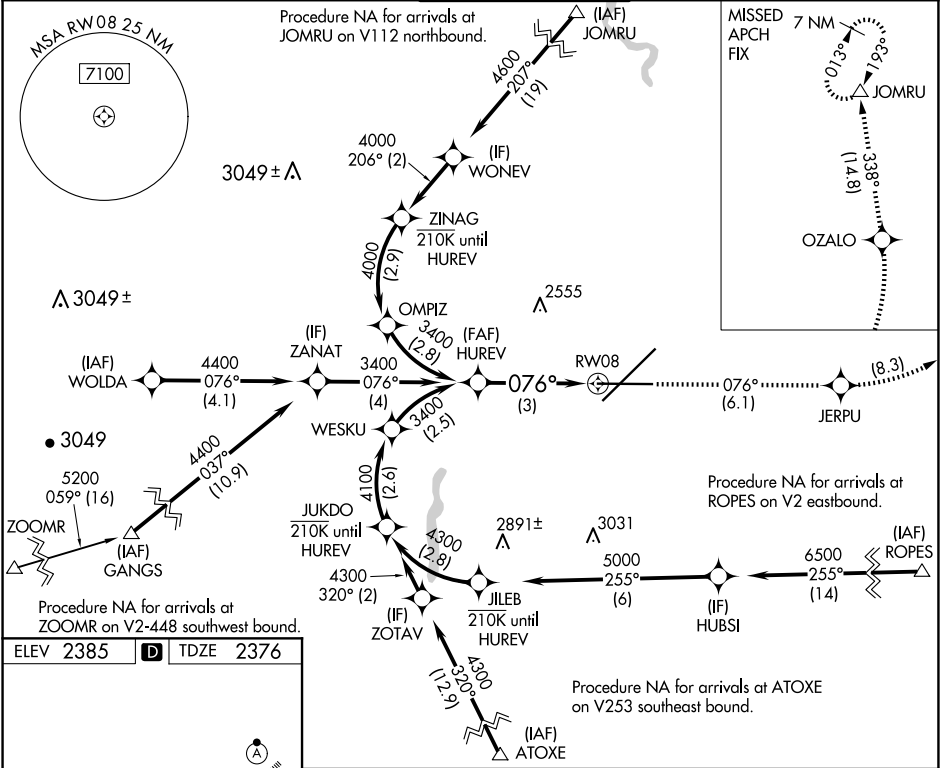





| | | |
|---------|----------|------|
| APP CRS | Rwy Ldg | 8199 |
| 076° | TDZE | 2376 |
| | Apt Elev | 2385 |

RNAV (RNP) Z RWY 8
SPOKANE INTL (GEG)

| | |
|--|---|
| RNP AR APCH. RF required. | MISSED APPROACH: Climb to 7000 on track 076° to JERPU, left turn to OZALO, and on track 338° to JOMRU and hold. |
| ▼ For uncompensated Baro-VNAV systems, procedure NA below -18°C or above 53°C. | |

| | | | | |
|-----------------|---|---------------|-------------|----------|
| ATIS | SPOKANE APP CON | SPOKANE TOWER | GND CON | CLNC DEL |
| 124.325 254.375 | 123.75 282.25 (205°-025°) 133.35 263.0 (026°-204°) | 118.3 278.3 | 121.9 348.6 | 127.55 |



| | | | | | | | |
|------------------------|------------|--|--|---|--|---------|------------|
| HUREV 3400 | | 7000 ↑ tr 076° | JERPU  |  | OZALO  | tr 338° | JOMRU △ |
| 3400 | | VGSI and RNAV glidepath not coincident. (VGSI Angle 3.00/TCH 45). | | | | RW08 | |
| GP 3.00° TCH 60 | | See planview for multiple IF locations. | | | | | |
| | | 3 NM | | | | | |
| CATEGORY | A | B | C | D | | | |
| RNP 0.11 DA | 2665-7/8 | | 289 (300-7/8) | | | | |
| RNP 0.30 DA | 2869-1 3/8 | | 493 (500-1 3/8) | | | | |
| AUTHORIZATION REQUIRED | | | | | | | |