

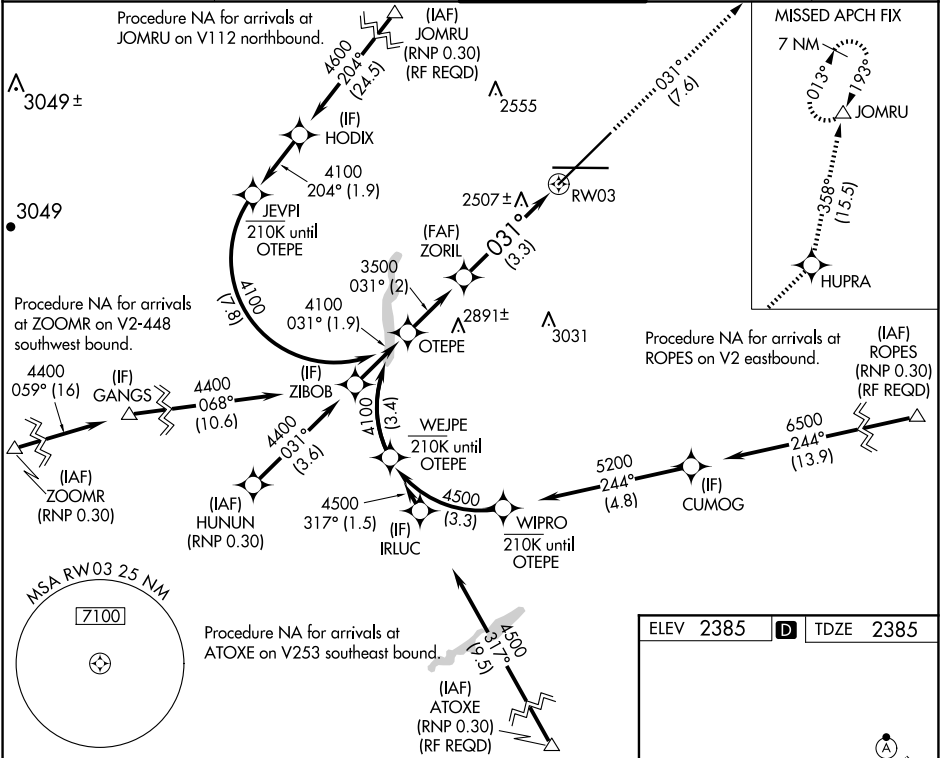
APP CRS	Rwy Ldg	11002
031°	TDZE	2385
	Apt Elev	2385

# RNAV (RNP) Z RWY 3

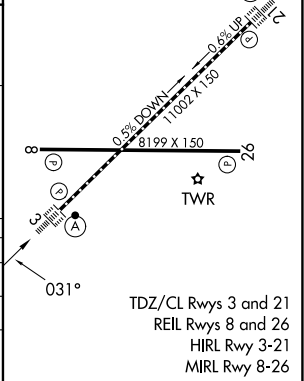
SPOKANE INTL (GEG)

RNP AR APCH.	ALSF-2	MISSED APPROACH: Climb to 7000 on track 031° to HUPRA and on track 358° to JOMRU and hold.
▼ For uncompensated Baro-VNAV systems, procedure NA below -18°C or above 53°C.		

ATIS	SPOKANE APP CON	SPOKANE TOWER	GND CON	CLNC DEL
124.325 254.375	123.75 282.25 (205°-025°) 133.35 263.0 (026°-204°)	118.3 278.3	121.9 348.6	127.55



VGSI and RNAV glidepath not coincident (VGSI Angle 3.00/TCH 69)	7000	HUPRA	tr 031°	358°	JOMRU
ZORIL	3500				
GP 3.00° TCH 55					
CATEGORY	A	B	C	D	
RNP 0.11 DA		2716/26	331 (400-½)		
RNP 0.30 DA		2842/45	457 (500-¾)		
AUTHORIZATION REQUIRED					



NW-1, 07 AUG 2025 to 04 SEP 2025

NW-1, 07 AUG 2025 to 04 SEP 2025